

Mouse C4.4A / LYPD3 Protein (His Tag)

Catalog Number: 50546-M08H



Sino Biological
Biological Solution Specialist

General Information

Gene Name Synonym:

2310061G07Rik; C4.4a

Protein Construction:

A DNA sequence encoding the N-terminal segment of mouse LYPD3 (NP_598504.1) (Met 1-His 287) was expressed, with a polyhistidine tag at the C-terminus.

Source: Mouse

Expression Host: HEK293 Cells

QC Testing

Purity: > 92 % as determined by SDS-PAGE

Bio Activity:

Measured by its ability to bind recombinant human Galectin3 in a functional ELISA.

Endotoxin:

< 1.0 EU per µg of the protein as determined by the LAL method

Stability:

Samples are stable for up to twelve months from date of receipt at -70 °C

Predicted N terminal: Leu 33

Molecular Mass:

The recombinant mouse LYPD3 consists of 266 amino acids and has a predicted molecular mass of 28 kDa. The apparent molecular mass of rmLYPD3 is approximately 55-60 kDa in SDS-PAGE under reducing conditions.

Formulation:

Lyophilized from sterile PBS, pH 7.4

Normally 5 % - 8 % trehalose, mannitol and 0.01% Tween80 are added as protectants before lyophilization. Specific concentrations are included in the hardcopy of COA. Please contact us for any concerns or special requirements.

Usage Guide

Storage:

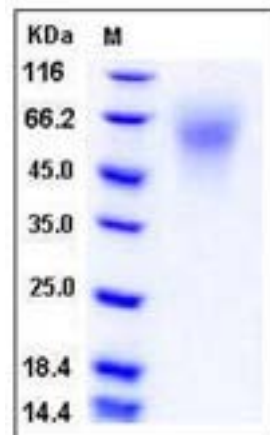
Store it under sterile conditions at -20°C to -80°C upon receiving. Recommend to aliquot the protein into smaller quantities for optimal storage.

Avoid repeated freeze-thaw cycles.

Reconstitution:

Detailed reconstitution instructions are sent along with the products.

SDS-PAGE:



Protein Description

Ly6 / PLAUR domain-containing protein 3, also known as GPI-anchored metastasis-associated protein C4.4A homolog, Matrigel-induced gene C4 protein, MIG-C4 and LYPD3, is a cell membrane protein which contains twoUPAR/Ly6 domains. Human LYPD3 contains twoUPAR/Ly6 domains. LYPD3 is expressed in placenta, skin and urothelium. It is found in suprabasal keratinocytes of chronic wounds. Weak expression of LYPD3 is found in esophagus and peripheral blood mononuclear cells. It is found in the majority of primary and metastatic transitional cell carcinomas (TCCs) and as well in breast cancer tissues, but not in adjacent normal tissues. High expression of LYPD3 is found in the tumor component of some noninvasive superficial lesions and in invasive and metastatic urothelial cancers. LYPD3 is up-regulated in migrating keratinocytes during epithelisation of incisional skin wounds. LYPD3 supports cell migration. It may be involved in urothelial cell-matrix interactions. It may also be involved in tumor progression

References

1.Smith B.A., et al., 2001, Cancer Res. 61:1678-85. 2.Wuerfel J., et al., 2001, Gene 262:35-41. 3.Clark H.F., et al., 2003, Genome Res. 13:2265-70.

Manufactured By Sino Biological Inc., FOR RESEARCH USE ONLY. NOT FOR USE IN HUMANS.

For US Customer: Fax: 267-657-0217 • Tel: 215-583-7898

Global Customer: Fax :+86-10-5862-8288 • Tel:+86-400-890-9989 • <http://www.sinobiological.com>