

Mouse FOLR1 / FR-alpha Protein (His Tag)



Sino Biological
Biological Solution Specialist

Catalog Number: 50573-M08H

General Information

Gene Name Synonym:

FBP1; Folbp-1; Folbp1

Protein Construction:

A DNA sequence encoding the mouse FOLR1 (NP_032060.2) (Met 1-Met 231) without the pro peptide was expressed, with a polyhistidine tag at the C-terminus.

Source: Mouse

Expression Host: HEK293 Cells

QC Testing

Purity: > 95 % as determined by SDS-PAGE

Endotoxin:

< 1.0 EU per μg of the protein as determined by the LAL method

Stability:

Samples are stable for up to twelve months from date of receipt at -70°C

Predicted N terminal: Thr 25

Molecular Mass:

The recombinant mouse FOLR1 consists of 218 amino acids and has a predicted molecular mass of 25.6 kDa. In SDS-PAGE under reducing conditions, the apparent molecular mass of rFOLR1 is approximately 33-37 kDa due to glycosylation.

Formulation:

Lyophilized from sterile PBS, pH 7.4

Normally 5 % - 8 % trehalose, mannitol and 0.01% Tween80 are added as protectants before lyophilization. Specific concentrations are included in the hardcopy of COA. Please contact us for any concerns or special requirements.

Usage Guide

Storage:

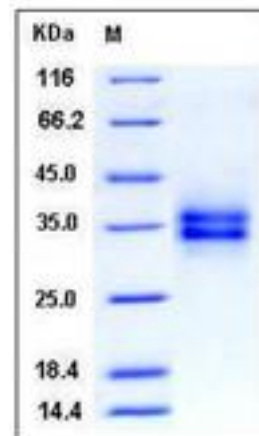
Store it under sterile conditions at -20°C to -80°C upon receiving. Recommend to aliquot the protein into smaller quantities for optimal storage.

Avoid repeated freeze-thaw cycles.

Reconstitution:

Detailed reconstitution instructions are sent along with the products.

SDS-PAGE:



Protein Description

The protein encoded by FOLR1 gene is a member of the folate receptor family. Members of this gene family bind folic acid and its reduced derivatives, and transport 5-methyltetrahydrofolate into cells. This gene product is a secreted protein that either anchors to membranes via a glycosyl-phosphatidylinositol linkage or exists in a soluble form. Mutations in this gene have been associated with neurodegeneration due to cerebral folate transport deficiency. Due to the presence of two promoters, multiple transcription start sites, and alternative splicing, multiple transcript variants encoding the same protein have been found for this gene. Folate receptor α (FR α) is the most important subunit of Folate receptor and the alpha isoform has been shown to be selectively overexpressed in cancer types like breast and ovarian cancer compared to normal breast and ovarian epithelial cells. It was determined that Folate receptor α exhibits a limited expression on the apical surfaces of the epithelial cells of normal lung, breast, thyroid, parathyroid, and kidney tissues. For their uptake of folate, normal cells rely almost exclusively on the reduced folate carrier, whereas many carcinomas and myeloid leukemia cells overexpress a high-affinity FR on their surfaces, perhaps reflecting their increased need for folate to support rapid cell division

References

3.Senol S, Ceyran AB, Aydin A, *et al.* Folate receptor α expression and significance in endometrioid endometrium carcinoma and endometrial hyperplasia. International Journal of Clinical and Experimental Pathology. 2015;8(5):5633-5641.

Manufactured By Sino Biological Inc., FOR RESEARCH USE ONLY. NOT FOR USE IN HUMANS.

For US Customer: Fax: 267-657-0217 ● Tel: 215-583-7898

Global Customer: Fax :+86-10-5862-8288 ● Tel:+86-400-890-9989 ● <http://www.sinobiological.com>