

**Bile salt-activated lipase / CEL
Antibody, Rabbit PAb, Antigen
Affinity Purified**

Catalog Number: 50583-T24



Sino Biological
Biological Solution Specialist

GENERAL INFORMATION

Immunogen:	Recombinant Mouse Bile salt-activated lipase / CEL Protein (Catalog#50583-M08B)
Preparation	Produced in rabbits immunized with purified, recombinant Mouse Bile salt-activated lipase / CEL (rM Bile salt-activated lipase / CEL; Catalog#50583-M08B; NP_034015.1; Met1-Leu534). Bile salt-activated lipase / CEL specific IgG was purified by Mouse Bile salt-activated lipase / CEL affinity chromatography.
Ig Type:	Rabbit IgG
Specificity:	Mouse Bile salt-activated lipase / CEL
Formulation:	0.2 µm filtered solution in PBS
Storage:	This antibody can be stored at 2°C-8°C for one month without detectable loss of activity. Antibody products are stable for twelve months from date of receipt when stored at -20°C to -80°C. Preservative-Free. Sodium azide is recommended to avoid contamination (final concentration 0.05%-0.1%). It is toxic to cells and should be disposed of properly. Avoid repeated freeze-thaw cycles.

APPLICATIONS

Applications:	ELISA, IHC-P
----------------------	--------------

RECOMMENDED CONCENTRATION

IHC-P	IHC-P: 1:1000-1:4000
ELISA	ELISA: 1:5000-1:10000 This antibody can be used at 1:5000-1:10000 with the appropriate secondary reagents to detect Mouse Bile salt-activated lipase / CEL.

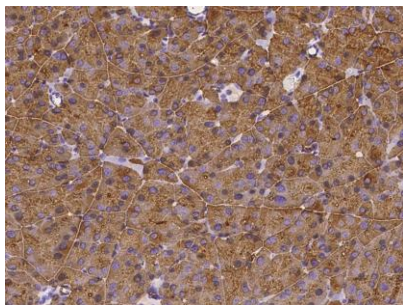
Please Note: Optimal concentrations/dilutions should be determined by the end user.

**Bile salt-activated lipase / CEL
Antibody, Rabbit PAb, Antigen
Affinity Purified**

Catalog Number: 50583-T24



Sino Biological
Biological Solution Specialist



Immunohistochemical staining of mouse CEL in mouse pancreas with rabbit polyclonal antibody (1:2000, formalin-fixed paraffin embedded sections).