

HSP60/HSPD1 Antibody, Rabbit PAb, Antigen Affinity Purified



Sino Biological
Biological Solution Specialist

Catalog Number: 50596-T62

GENERAL INFORMATION

Immunogen:	Recombinant Mouse HSP60/HSPD1 Protein (Catalog#50596-M07E)
Preparation	Produced in rabbits immunized with purified, recombinant Mouse HSP60/HSPD1 (rM HSP60/HSPD1; Catalog#50596-M07E; NP_034607.3; Leu2-Phe573). HSP60/HSPD1 specific IgG was purified by Mouse HSP60/HSPD1 affinity chromatography.
Ig Type:	Rabbit IgG
Specificity:	Mouse HSP60/HSPD1
Formulation:	0.2 µm filtered solution in PBS
Storage:	This antibody can be stored at 2°C-8°C for one month without detectable loss of activity. Antibody products are stable for twelve months from date of receipt when stored at -20°C to -80°C. Preservative-Free. Avoid repeated freeze-thaw cycles.
Alternative Names:	60kDa,Hsp60

APPLICATIONS

Applications:	WB,ELISA,IHC-P,ICC/IF,IP
----------------------	--------------------------

RECOMMENDED CONCENTRATION

IHC-P	IHC-P: 1:500-1:2000
ICC/IF	ICC/IF: 1:100-1:500
Western Blot	WB: 1:10000-1:50000
Immunoprecipitation	IP:0.5-2µL/mg of lysate
ELISA	ELISA: 1:5000-1:10000 This antibody can be used at 1:5000-1:10000 with the appropriate secondary reagents to detect Mouse HSP60/HSPD1.

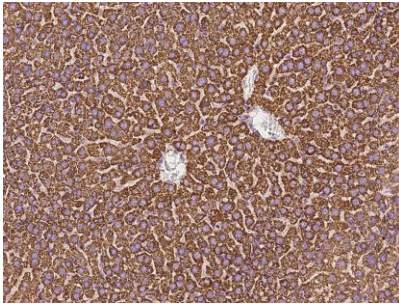
Please Note: Optimal concentrations/dilutions should be determined by the end user.

HSP60/HSPD1 Antibody, Rabbit PAb, Antigen Affinity Purified

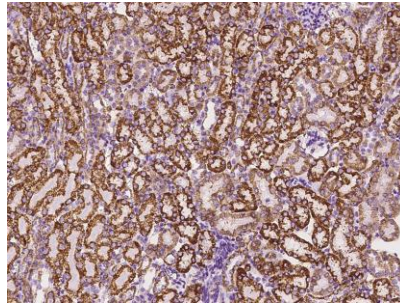


Sino Biological
Biological Solution Specialist

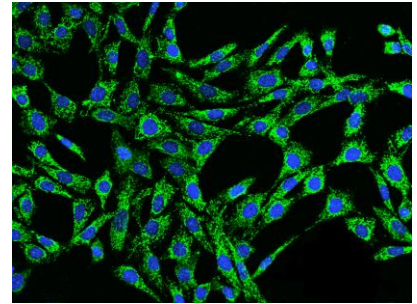
Catalog Number: 50596-T62



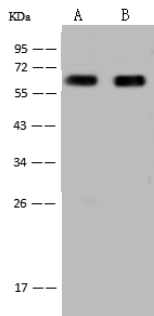
Immunohistochemical staining of mouse HSP60 in mouse liver with rabbit polyclonal antibody at 1:1000 dilution, formalin-fixed paraffin embedded sections.



Immunohistochemical staining of mouse HSP60 in mouse kidney with rabbit polyclonal antibody at 1:1000 dilution, formalin-fixed paraffin embedded sections.



Immunofluorescence staining of mouse HSPD1 in NIH-3T3 cells. Cells were fixed with 4% PFA, permeabilized with 0.1% Triton X-100 in PBS, blocked with 10% serum, and incubated with rabbit anti-Mouse HSPD1 polyclonal antibody (dilution ratio 1:200) at 4°C overnight. Then cells were stained with the Alexa Fluor®488-conjugated Goat Anti-rabbit IgG secondary antibody (green) and counterstained with DAPI (blue). Positive staining was localized to Mitochondrion.



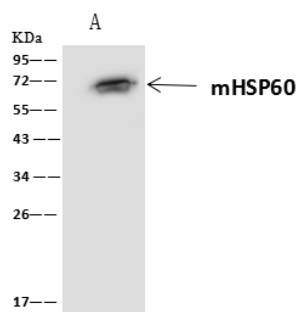
Anti-HSP60 rabbit polyclonal antibody at 1:10000 dilution
Lane A: NIH-3T3 Whole Cell Lysate
Lane B: Raw264.7 Whole Cell Lysate

Lysates/proteins at 30 µg per lane.

Secondary
Goat Anti-Rabbit IgG (H+L)/HRP at 1/10000 dilution.

Developed using the ECL technique. Performed under reducing conditions.

Predicted band size: 60 kDa
Observed band size: 60 kDa



mHSP60 was immunoprecipitated using:
Lane A: 0.5 mg NIH3T3 Whole Cell Lysate

4 µL anti-mHSP60 rabbit polyclonal antibody and 60 µg of Immunomagnetic beads Protein A/G. Primary antibody:

Anti-mHSP60 rabbit polyclonal antibody, at 1:100 dilution

Secondary antibody:
Clean-Blot IP Detection Reagent (HRP) at 1:1000 dilution

Developed using the ECL technique.
Performed under reducing conditions.

Predicted band size: 60 kDa
Observed band size: 60 kDa

Manufactured By Sino Biological Inc., FOR RESEARCH USE ONLY. NOT FOR USE IN HUMANS.

Tel: 215-583-7898 (US); +86-400-890-9989 (Global) •

<http://www.sinobiological.com>