

Mouse c-MET / HGFR Protein (Fc Tag)

Catalog Number: 50622-M02H



Sino Biological
Biological Solution Specialist

General Information

Gene Name Synonym:

AI838057; c-Met; HGF; HGFR; Par4

Protein Construction:

A DNA sequence encoding the mouse MET (NP_032617.2) extracellular domain (Met 1-Asn 929) was fused with the Fc region of human IgG1 at the C-terminus.

Source: Mouse

Expression Host: HEK293 Cells

QC Testing

Purity: > 92 % as determined by SDS-PAGE

Bio Activity:

Measured by its binding ability in a functional ELISA . Immobilized human HGF at 2 µg/ml (100 µl/well) can bind mouse HGFR with a linear ranger of 1.28-32ng/ml.

Endotoxin:

< 1.0 EU per µg of the protein as determined by the LAL method

Stability:

Samples are stable for up to twelve months from date of receipt at -70 °C

Predicted N terminal: Glu 25 & Ser 307

Molecular Mass:

The recombinant mouse Met/Fc chimera is a disulfide-linked homodimer of the Met which is a heterodimer composed of the proteolytically cleaved α and β subunits. Each α and β together with the C-terminal Fc tag consists of 1146 amino acids and has a predicted molecular mass of 128 (α =32 + Fc tagged β =96) kDa. The apparent molecular mass of the rm MET/Fc heterodimer thus is approximately 43 kDa and 115-120 kDa respectively in SDS-PAGE under reducing conditions due to glycosylation.

Formulation:

Lyophilized from sterile PBS, pH 7.4

Normally 5 % - 8 % trehalose, mannitol and 0.01% Tween80 are added as protectants before lyophilization. Specific concentrations are included in the hardcopy of COA. Please contact us for any concerns or special requirements.

Usage Guide

Storage:

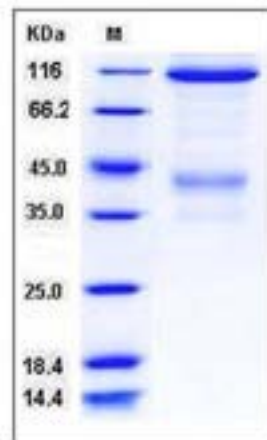
Store it under sterile conditions at -20°C to -80°C upon receiving. Recommend to aliquot the protein into smaller quantities for optimal storage.

Avoid repeated freeze-thaw cycles.

Reconstitution:

Detailed reconstitution instructions are sent along with the products.

SDS-PAGE:



Protein Description

Hepatocyte growth factor receptor (HGFR), also known as c-Met or mesenchymal-epithelial transition factor (MET), is a receptor tyrosine kinase (RTK) that has been shown to be overexpressed and/or mutated in a variety of malignancies. HGFR protein is produced as a single-chain precursor, and HGF is the only known ligand. Normal HGF/HGFR signaling is essential for embryonic development, tissue repair or wound healing, whereas aberrantly active HGFR has been strongly implicated in tumorigenesis, particularly in the development of invasive and metastatic phenotypes. HGFR protein is a multifaceted regulator of growth, motility, and invasion, and is normally expressed by cells of epithelial origin. Preclinical studies suggest that targeting aberrant HGFR signaling could be an attractive therapy in cancer.

References

- 1.McGill GG, *et al.* (2006) c-Met expression is regulated by Mitf in the melanocyte lineage. *J Biol Chem.* 281(15): 10365-73.
- 2.Garcia S, *et al.* (2007) c-Met overexpression in inflammatory breast carcinomas: automated quantification on tissue microarrays. *British journal of cancer.* 96(2): 329-35.
- 3.Socoteanu MP, *et al.* (2008) c-Met targeted therapy of cholangiocarcinoma. *World J Gastroenterol.* 14(19): 2990-4.

Manufactured By Sino Biological Inc., FOR RESEARCH USE ONLY. NOT FOR USE IN HUMANS.

For US Customer: Fax: 267-657-0217 • Tel: 215-583-7898

Global Customer: Fax :+86-10-5862-8288 • Tel:+86-400-890-9989 • <http://www.sinobiological.com>