

Semaphorin 4D / SEMA4D / CD100 Antibody (FITC), Rabbit MAb



Sino Biological
Biological Solution Specialist

Catalog Number: 50642-R010-F

EliteRmab® is a registered trademark of Sino Biological Inc.

GENERAL INFORMATION

Immunogen:	Recombinant Mouse Semaphorin 4D / SEMA4D / CD100 protein (Catalog#50642-M08H)
Reagents:	FITC-conjugated Rabbit monoclonal antibody
Preparation	This antibody was obtained from a rabbit immunized with purified, recombinant Mouse Semaphorin 4D / SEMA4D / CD100 (rM Semaphorin 4D / SEMA4D / CD100; Catalog#50642-M08H; NP_038688.2; Met 1-Arg 733) and conjugated with FITC under optimum conditions, the unreacted FITC was removed.
Ig Type:	Rabbit IgG
Clone ID:	010
Specificity:	Mouse Semaphorin 4D / SEMA4D / CD100
Concentration:	10 µl/Test, 0.1 mg/ml
Formulation:	Aqueous solution containing 0.5% BSA and 0.09% sodium azide
Storage:	This antibody is stable for 12 months from date of receipt when stored at 2°C-8°C. Protected from prolonged exposure to light. Do not freeze! Sodium azide is toxic to cells and should be disposed of properly. Flush with large volumes of water during disposal.

APPLICATIONS

Applications:	FCM
----------------------	-----

RECOMMENDED CONCENTRATION

Please Note: Optimal concentrations/dilutions should be determined by the end user.

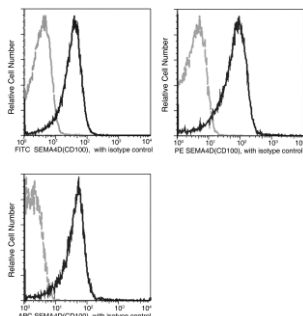
Semaphorin 4D / SEMA4D / CD100 Antibody (FITC), Rabbit MAb

Catalog Number: 50642-R010-F



Sino Biological
Biological Solution Specialist

EliteRmab® is a registered trademark of Sino Biological Inc.



Flow cytometric analysis of mouse SEMA4D (CD100) expression on splenocytes.

Flow cytometry was performed on a BD FACSCalibur flow cytometry system. Please refer to www.sinobiological.com/Flow-Cytometry-FACS-Protocols-a-750.html for technical protocols.