

# ENPP2 Antibody, Rabbit PAb, Antigen Affinity Purified



Sino Biological  
Biological Solution Specialist

Catalog Number: 50663-T24

## GENERAL INFORMATION

Immunogen:	Recombinant Mouse ENPP2 Protein (Catalog#50663-M07H)
Preparation	Produced in rabbits immunized with purified, recombinant Mouse ENPP2 (rM ENPP2; Catalog#50663-M07H; Q9R1E6-1; Ser49-Ile862). ENPP2 specific IgG was purified by Mouse ENPP2 affinity chromatography.
Ig Type:	Rabbit IgG
Specificity:	Mouse ENPP2
Formulation:	0.2 µm filtered solution in PBS
Storage:	This antibody can be stored at 2°C-8°C for one month without detectable loss of activity. Antibody products are stable for twelve months from date of receipt when stored at -20°C to -80°C. Preservative-Free. Sodium azide is recommended to avoid contamination (final concentration 0.05%-0.1%). It is toxic to cells and should be disposed of properly. Avoid repeated freeze-thaw cycles.

## APPLICATIONS

Applications:	ELISA, IHC-P
---------------	--------------

## RECOMMENDED CONCENTRATION

IHC-P	IHC-P: 1:200-1:1000
ELISA	ELISA: 1:5000-1:10000 This antibody can be used at 1:5000-1:10000 with the appropriate secondary reagents to detect Mouse ENPP2.

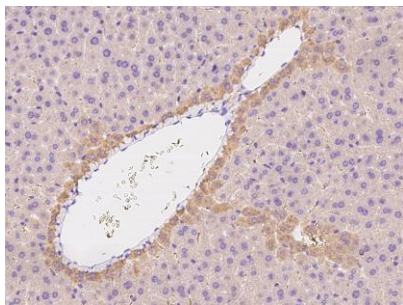
**Please Note: Optimal concentrations/dilutions should be determined by the end user.**

# ENPP2 Antibody, Rabbit PAb, Antigen Affinity Purified

Catalog Number: 50663-T24



Sino Biological  
Biological Solution Specialist



Immunohistochemical staining of mouse ENPP2 in mouse liver with rabbit polyclonal antibody at 1:300 dilution, formalin-fixed paraffin embedded sections.