

# Mouse HER2 / ErbB2 / CD340 Protein (His Tag)

Catalog Number: 50714-M08H



Sino Biological  
Biological Solution Specialist

## General Information

### Gene Name Synonym:

c-erbB2; c-neu; Erbb-2; HER-2; HER2; I11Jus8; mKIAA3023; Neu

### Protein Construction:

A DNA sequence encoding the mouse ERBB2 (P70424) extracellular domain (Met 1-Thr 653) was expressed, with a C-terminal polyhistidine tag.

**Source:** Mouse

**Expression Host:** HEK293 Cells

## QC Testing

**Purity:** > 95 % as determined by SDS-PAGE

### Bio Activity:

**Measured by its ability to bind Anti-ErbB2 Antibody (Pertuzumab) (Cat:68046-H001) in functional ELISA.**

### Endotoxin:

< 1.0 EU per µg of the protein as determined by the LAL method

**Predicted N terminal:** Thr 23

### Molecular Mass:

The secreted recombinant mouse ERBB2 comprises 642 amino acids and has a calculated molecular mass of 71.1 kDa. As a result of glycosylation, the apparent molecular mass of the recombinant protein is approximately 100-110 kDa in SDS-PAGE under reducing conditions.

### Formulation:

Lyophilized from sterile PBS, pH 7.4

Normally 5 % - 8 % trehalose, mannitol and 0.01% Tween80 are added as protectants before lyophilization. Specific concentrations are included in the hardcopy of COA. Please contact us for any concerns or special requirements.

## Usage Guide

### Stability & Storage:

Samples are stable for twelve months from date of receipt at -20°C to -80°C.

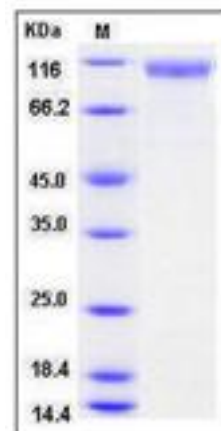
Store it under sterile conditions at -20°C to -80°C upon receiving. Recommend to aliquot the protein into smaller quantities for optimal storage.

**Avoid repeated freeze-thaw cycles.**

### Reconstitution:

Detailed reconstitution instructions are sent along with the products.

## SDS-PAGE:



## Protein Description

Human epidermal growth factor receptor 2 (HER2), also known as ErbB2, NEU, and CD340, is a type I membrane glycoprotein and belongs to the epidermal growth factor (EGF) receptor family. HER2 protein cannot bind growth factors due to the lacking of ligand binding domain of its own and autoinhibited constitutively. However, HER2 forms a heterodimer with other ligand-bound EGF receptor family members, therefore stabilizes ligand binding and enhances kinase-mediated activation of downstream molecules. HER2 plays a key role in development, cell proliferation and differentiation. HER2 gene has been reported to associate with malignancy and a poor prognosis in numerous carcinomas, including breast, prostate, ovarian, lung cancers and so on.

## References

3.Krawczyk N, *et al.* (2009) HER2 status on persistent disseminated tumor cells after adjuvant therapy may differ from initial HER2 status on primary tumor. *Anticancer Res.* 29(10): 4019-24.