

# CD59a Antibody (PE), Rabbit MAb



Sino Biological  
Biological Solution Specialist

Catalog Number: 50724-R108-P

EliteRmab® is a registered trademark of Sino Biological Inc.

GENERAL INFORMATION	
Immunogen:	Recombinant Mouse CD59a Protein (Catalog#50724-M08H)
Reagents:	PE-conjugated Rabbit monoclonal antibody
Preparation	This antibody was obtained from a rabbit immunized with purified, recombinant Mouse CD59a (rM CD59a; Catalog#50724-M08H; NP_001104530.1; Met1-Lys95) and conjugated with PE under optimum conditions, the unreacted PE was removed.
Ig Type:	Rabbit IgG
Clone ID:	108
Specificity:	Mouse CD59a
Concentration:	5 µl/Test, 0.1 mg/ml
Formulation:	Aqueous solution containing 0.5% BSA and 0.03%ProClin300
Storage:	This antibody can be stored at 2℃-8℃ for twelve months without detectable loss of activity. Protected from prolonged exposure to light. Do not freeze !
APPLICATIONS	
Applications:	FCM

**Please Note: Optimal concentrations/dilutions should be determined by the end user.**

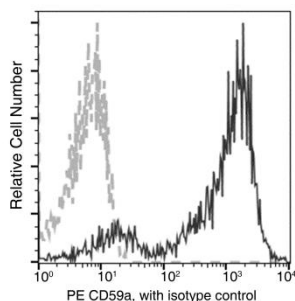
# CD59a Antibody (PE), Rabbit MAb



Sino Biological  
Biological Solution Specialist

Catalog Number: 50724-R108-P

EliteRmab® is a registered trademark of Sino Biological Inc.



Flow cytometric analysis of Mouse CD59a expression on BABL/c bone marrow erythroid cells. Cells were stained with PE-conjugated anti-Mouse CD59a. The fluorescence histograms were derived from gated events with the forward and side light-scatter characteristics of erythroid cells.

Flow cytometry was performed on a BD FACSCalibur flow cytometry system. Please refer to [www.sinobiological.com/Flow-Cytometry-FACS-Protocols-a-750.html](http://www.sinobiological.com/Flow-Cytometry-FACS-Protocols-a-750.html) for technical protocols.