



Catalog Number: 50794-R241

EliteRmab® is a registered trademark of Sino Biological Inc.

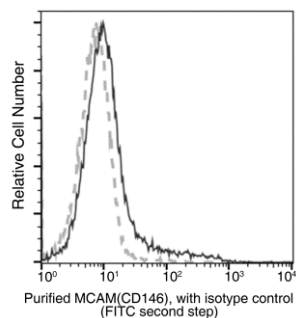
GENERAL INFORMATION	
Immunogen:	Recombinant Mouse CD146 / MCAM Protein (Catalog#50794-M08H)
Preparation	This antibody was obtained from a rabbit immunized with purified, recombinant Mouse CD146 / MCAM (rM CD146 / MCAM; Catalog#50794-M08H; Q8R2Y2-1; Met1-Val563).
Ig Type:	Rabbit IgG
Clone ID:	241
Specificity:	Mouse CD146 / MCAM
Formulation:	0.2 µm filtered solution in PBS
APPLICATIONS	
Applications:	ELISA,FCM
RECOMMENDED CONCENTRATION	
Flow Cytometry	FCM: 1:25-1:100
ELISA	ELISA: 1:5000-1:10000 This antibody can be used at 1:5000-1:10000 with the appropriate secondary reagents to detect Mouse CD146 / MCAM.

Please Note: Optimal concentrations/dilutions should be determined by the end user.



Catalog Number: 50794-R241

EliteRmab® is a registered trademark of Sino Biological Inc.



Flow cytometric analysis of Mouse MCAM(CD146) expression on BABL/c splenocytes. Cells were stained with purified anti-Mouse MCAM(CD146), then a FITC-conjugated second step antibody. The fluorescence histograms were derived from gated events with the forward and side light-scatter characteristics of intact cells.

Flow cytometry was performed on a BD FACSCalibur flow cytometry system. Please refer to www.sinobiological.com/Flow-Cytometry-FACS-Protocols-a-750.html for technical protocols.