

# CD146/MCAM Antibody (FITC), Rabbit MAb



Sino Biological  
Biological Solution Specialist

Catalog Number: 50794-R241-F

EliteRmab® is a registered trademark of Sino Biological Inc.

GENERAL INFORMATION	
Immunogen:	Recombinant Mouse CD146/MCAM Protein (Catalog#50794-M08H)
Reagents:	FITC-conjugated Rabbit monoclonal antibody
Preparation	This antibody was obtained from a rabbit immunized with purified, recombinant Mouse CD146/MCAM (rM CD146/MCAM; Catalog#50794-M08H; Q8R2Y2-1; Met1-Val563) and conjugated with FITC under optimum conditions, the unreacted FITC was removed.
Ig Type:	Rabbit IgG
Clone ID:	241
Specificity:	Mouse CD146/MCAM
Concentration:	5 µl/Test, 0.1 mg/ml
Formulation:	Aqueous solution containing 0.5% BSA and 0.03%ProClin300
Storage:	This antibody can be stored at 2℃-8℃ for twelve months without detectable loss of activity. Protected from prolonged exposure to light. Do not freeze !
APPLICATIONS	
Applications:	FCM

**Please Note: Optimal concentrations/dilutions should be determined by the end user.**

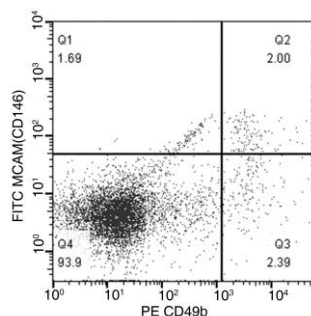
# CD146/MCAM Antibody (FITC), Rabbit MAb

Catalog Number: 50794-R241-F



Sino Biological  
Biological Solution Specialist

EliteRmab® is a registered trademark of Sino Biological Inc.



Flow cytometric analysis of Mouse MCAM(CD146) expression on BABL/c splenocytes. Cells were stained with FITC-conjugated anti-Mouse MCAM(CD146) and PE conjugated anti-mouse CD49b (BD Pharmingen™ Cat. No. 558759). The dot plots were derived from events with the forward and side light-scatter characteristics of intact cells.

Flow cytometry was performed on a BD FACSCalibur flow cytometry system. Please refer to [www.sinobiological.com/Flow-Cytometry-FACS-Protocols-a-750.html](http://www.sinobiological.com/Flow-Cytometry-FACS-Protocols-a-750.html) for technical protocols.