

CD146/MCAM Antibody, Rabbit MAb



Sino Biological
Biological Solution Specialist

Catalog Number: 50794-R281

EliteRmab® is a registered trademark of Sino Biological Inc.

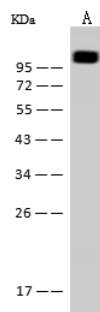
GENERAL INFORMATION	
Immunogen:	Recombinant Mouse CD146/MCAM Protein (Catalog#50794-M08H)
Preparation	This antibody was obtained from a rabbit immunized with purified, recombinant Mouse CD146/MCAM (rM CD146/MCAM; Catalog#50794-M08H; Q8R2Y2-1; Met1-Val563).
Ig Type:	Rabbit IgG
Clone ID:	281
Specificity:	Mouse CD146/MCAM
Formulation:	0.2 µm filtered solution in PBS
Storage:	This antibody can be stored at 2°C-8°C for one month without detectable loss of activity. Antibody products are stable for twelve months from date of receipt when stored at -20°C to -80°C. Preservative-Free. Sodium azide is recommended to avoid contamination (final concentration 0.05%-0.1%). It is toxic to cells and should be disposed of properly. Avoid repeated freeze-thaw cycles.
APPLICATIONS	
Applications:	WB
RECOMMENDED CONCENTRATION	
Western Blot	WB: 1:500-1:2000

Please Note: Optimal concentrations/dilutions should be determined by the end user.



Catalog Number: 50794-R281

EliteRmab® is a registered trademark of Sino Biological Inc.



Anti-MCAM rabbit monoclonal antibody at
1:500 dilution

Lane A: Mouse liver tissue lysate

Lysates/proteins at 30 µg per lane.

Secondary

Goat Anti-Rabbit IgG (H+L)/HRP at 1/10000
dilution.

Developed using the ECL technique.

Performed under reducing conditions.

Predicted band size: 72 kDa