

Mouse SLC3A2 / CD98 Protein (His Tag)

Catalog Number: 50813-M07H



Sino Biological
Biological Solution Specialist

General Information

Gene Name Synonym:

4F2; 4F2HC; AI314110; Cd98; Ly-10; Ly-m10; Ly10; Mdu1; Mgp-2hc; NACAE

Protein Construction:

A DNA sequence encoding the extracellular domain of mouse SLC3A2 (NP_001154885.1) (Ala 139-Ala 565) was fused with a polyhistidine tag at the N-terminus.

Source: Mouse

Expression Host: HEK293 Cells

QC Testing

Purity: > 98 % as determined by SDS-PAGE

Endotoxin:

< 1.0 EU per µg of the protein as determined by the LAL method

Stability:

Samples are stable for up to twelve months from date of receipt at -70 °C

Predicted N terminal: His

Molecular Mass:

The secreted recombinant mouse SLC3A2 comprises 446 amino acids and predicts a molecular mass of 49.2 kDa. As a result of glycosylation, the apparent molecular mass of mouse SLC3A2 is approximately 60-70 kDa in SDS-PAGE under reducing conditions.

Formulation:

Lyophilized from sterile PBS, pH 7.4

Normally 5 % - 8 % trehalose, mannitol and 0.01% Tween80 are added as protectants before lyophilization. Specific concentrations are included in the hardcopy of COA. Please contact us for any concerns or special requirements.

Usage Guide

Storage:

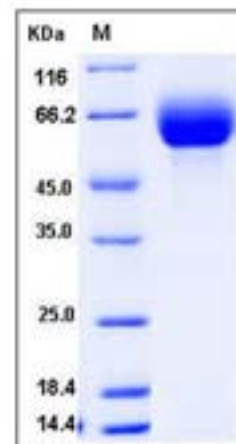
Store it under sterile conditions at -20°C to -80°C upon receiving. Recommend to aliquot the protein into smaller quantities for optimal storage.

Avoid repeated freeze-thaw cycles.

Reconstitution:

Detailed reconstitution instructions are sent along with the products.

SDS-PAGE:



Protein Description

4F2 cell-surface antigen heavy chain, also known as 4F2 heavy chain antigen, Lymphocyte activation antigen 4F2 large subunit, CD98, SLC3A2 and MDU1, is a single-pass type I membrane protein which belongs to the SLC3A transporter family. SLC3A2 / MDU1 is expressed ubiquitously in all tissues tested with highest levels detected in kidney, placenta and testis and weakest level in thymus. During gestation, expression in the placenta is significantly stronger at full-term than at the mid-trimester stage. SLC3A2 / MDU1 is expressed in HUVECs and at low levels in resting peripheral blood T-lymphocytes and quiescent fibroblasts. It is expressed in fetal liver and in the astrocytic process of primary astrocytic gliomas. SLC3A2 / MDU1 is also expressed in retinal endothelial cells and in the intestinal epithelial cell line Caco2-BBE. SLC3A2 / MDU1 is required for the function of light chain amino-acid transporters. It involved in sodium-independent, high-affinity transport of large neutral amino acids such as phenylalanine, tyrosine, leucine, arginine and tryptophan. SLC3A2 / MDU1 is involved in guiding and targeting of LAT1 and LAT2 to the plasma membrane. When associated with SLC7A6 or SLC7A7, SLC3A2 / MDU1 acts as an arginine/glutamine exchanger, following an antiport mechanism for amino acid transport, influencing arginine release in exchange for extracellular amino acids. SLC3A2 / MDU1 plays a role in nitric oxide synthesis in human umbilical vein endothelial cells (HUVECs) via transport of L-arginine. It is required for normal and neoplastic cell growth. When associated with SLC7A5/LAT1, SLC3A2 / MDU1 is also involved in the transport of L-DOPA across the blood-brain barrier, and that of thyroid hormones triiodothyronine (T3) and thyroxine (T4) across the cell membrane in tissues such as placenta.

References

1.Torrents D. et al., 1998, J Biol Chem. 273: 32437-45. 2.Pfeiffer R. et al., 1999, EMBO J. 18: 49-57. 3.Broeer A. et al., 2000, Biochem J. 349: 787-95.

Manufactured By Sino Biological Inc., FOR RESEARCH USE ONLY. NOT FOR USE IN HUMANS.

For US Customer: Fax: 267-657-0217 • Tel: 215-583-7898

Global Customer: Fax :+86-10-5862-8288 • Tel:+86-400-890-9989 • <http://www.sinobiological.com>