

# Mouse IL10RB / IL10R2 Protein (His Tag)

Catalog Number: 50846-M08H



Sino Biological  
Biological Solution Specialist

## General Information

### Gene Name Synonym:

6620401D04Rik; AI528744; CRF2-4; Crfb4; D16H21S58; D21S58h; IL-10R2; Il10r2

### Protein Construction:

A DNA sequence encoding the extracellular domain of mouse IL10RB (NP\_032375.2) (Met 1-Ser 222) was expressed, with a C-terminal polyhistidine tag.

**Source:** Mouse

**Expression Host:** HEK293 Cells

## QC Testing

**Purity:** > 98 % as determined by SDS-PAGE

### Bio Activity:

**Immobilized mouse IL10RB-His at 10 µg/ml (100 µl/well) can bind biotinylated human IL28B-His (Cat:11890-H08H). The EC<sub>50</sub> of biotinylated human IL28B-His (Cat:11890-H08H) is 0.13-0.31 µg/ml.**

### Endotoxin:

< 1.0 EU per µg of the protein as determined by the LAL method

### Stability:

Samples are stable for up to twelve months from date of receipt at -70 °C

**Predicted N terminal:** Met 22

### Molecular Mass:

The secreted recombinant mouse IL10RB comprises 212 amino acids and has a calculated molecular mass of 25 kDa. As a result of glycosylation, the apparent molecular mass of rmlIL10RB is approximately 35-45 kDa in SDS-PAGE under reducing conditions.

### Formulation:

Lyophilized from sterile PBS, pH 7.4

Normally 5 % - 8 % trehalose, mannitol and 0.01% Tween80 are added as protectants before lyophilization. Specific concentrations are included in the hardcopy of COA. Please contact us for any concerns or special requirements.

## Usage Guide

### Storage:

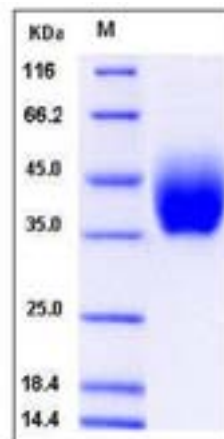
Store it under sterile conditions at -20°C to -80°C upon receiving. Recommend to aliquot the protein into smaller quantities for optimal storage.

**Avoid repeated freeze-thaw cycles.**

### Reconstitution:

Detailed reconstitution instructions are sent along with the products.

## SDS-PAGE:



## Protein Description

Interleukin 10 receptor, beta subunit (IL10RB/IL-10RB) also known as Cytokine receptor family 2 member 4, Interleukin-10 receptor subunit 2, and cytokine receptor family II, member 4, is a subunit for the interleukin-10 receptor. IL10RB/IL-10RB belongs to the cytokine receptor family. It is an accessory chain essential for the active interleukin 10 receptor complex. Coexpression of this and IL10RA proteins has been shown to be required for IL10-induced signal transduction. Defects in IL10RB/IL-10RB are the cause of inflammatory bowel disease type 25 (IBD25). It is a chronic, relapsing inflammation of the gastrointestinal tract with a complex etiology. It is subdivided into Crohn disease and ulcerative colitis phenotypes. Crohn disease may affect any part of the gastrointestinal tract from the mouth to the anus, but most frequently it involves the terminal ileum and colon. Bowel inflammation is transmural and discontinuous; it may contain granulomas or be associated with intestinal or perianal fistulas. In contrast, in ulcerative colitis, the inflammation is continuous and limited to rectal and colonic mucosal layers; fistulas and granulomas are not observed. Both diseases include extraintestinal inflammation of the skin, eyes, or joints.

**Manufactured By Sino Biological Inc., FOR RESEARCH USE ONLY. NOT FOR USE IN HUMANS.**

**For US Customer:** Fax: 267-657-0217 • Tel: 215-583-7898

**Global Customer:** Fax :+86-10-5862-8288 • Tel:+86-400-890-9989 • <http://www.sinobiological.com>