

# Mouse IL-1R8 / IL1RAPL1 Protein (Fc Tag)

Catalog Number: 50900-M02H



Sino Biological  
Biological Solution Specialist

## General Information

### Gene Name Synonym:

6330532G10Rik; C030039N24; IL1R8; IL1RAPL1; MRX34; OPHN4; TIGIRR-2

### Protein Construction:

A DNA sequence encoding the mouse IL1RAPL1 (P59823) extracellular domain (Met 1-Thr 357) was fused with the Fc region of human IgG1 at the C-terminus.

**Source:** Mouse

**Expression Host:** HEK293 Cells

## QC Testing

**Purity:** > 95 % as determined by SDS-PAGE

### Bio Activity:

**Measured by its ability to bind biotinylated human IL1 $\alpha$  (Cat:10128-HNCH) in functional ELISA.**

### Endotoxin:

< 1.0 EU per  $\mu$ g of the protein as determined by the LAL method

### Stability:

Samples are stable for up to twelve months from date of receipt at -70 °C

**Predicted N terminal:** Arg 25

### Molecular Mass:

The secreted recombinant mouse IL1RAPL1/Fc is a disulfide-linked homodimer. The reduced monomer comprises 574 amino acids and has a calculated molecular mass of 65 kDa. As a result of glycosylation, the apparent molecular mass of rmIL1RAPL1/Fc monomer is approximately 85-95 kDa in SDS-PAGE under reducing conditions.

### Formulation:

Lyophilized from sterile PBS, pH 7.4

Normally 5 % - 8 % trehalose, mannitol and 0.01% Tween80 are added as protectants before lyophilization. Specific concentrations are included in the hardcopy of COA. Please contact us for any concerns or special requirements.

## Usage Guide

### Storage:

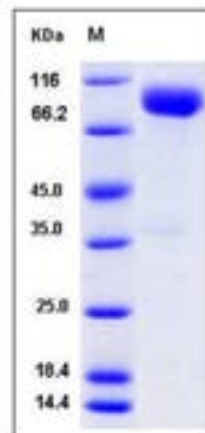
Store it under sterile conditions at -20°C to -80°C upon receiving. Recommend to aliquot the protein into smaller quantities for optimal storage.

**Avoid repeated freeze-thaw cycles.**

### Reconstitution:

Detailed reconstitution instructions are sent along with the products.

## SDS-PAGE:



## Protein Description

Interleukin-1 receptor accessory protein-like 1 (IL1RAPL1) is a member of interleukin-1 receptor family. The protein structurally comprises three extracellular immunoglobulin domains, which presumably mediate binding of an as yet unidentified ligand, a transmembrane region, and an intracellular domain, which is likely to enable signalling via the NF $\kappa$ B pathway. The means of signalling is almost certain to be identical to that used by the IL1R family and the more distally related Toll protein. L1RAPL1 protein physically interacts via its 150 aa C-terminal domain with neuronal calcium sensor-1 (NCS-1), a protein widely expressed in neurons and the related chromaffin and PC12 cells. IL1RAPL1 is an integral membrane protein responsible for a nonsyndromic form of mental retardation (MR). It is suggested to affect human cognitive ability to some extent, especially the memory and concentration capability.

**Manufactured By Sino Biological Inc., FOR RESEARCH USE ONLY. NOT FOR USE IN HUMANS.**

**For US Customer:** Fax: 267-657-0217 • Tel: 215-583-7898

**Global Customer:** Fax :+86-10-5862-8288 • Tel:+86-400-890-9989 • <http://www.sinobiological.com>