

# Mouse KLK1 / Kallikrein 1 Protein (His Tag)

Catalog Number: 50915-M08H



Sino Biological  
Biological Solution Specialist

## General Information

### Gene Name Synonym:

0610007D04Rik; Kal; Klk1b6; Klk6; mGk-6

### Protein Construction:

A DNA sequence encoding the mouse KLK1 (P15947) (Met1-Asp261) was expressed with a C-terminal polyhistidine tag.

**Source:** Mouse

**Expression Host:** HEK293 Cells

## QC Testing

**Purity:** > 90 % as determined by SDS-PAGE

### Bio Activity:

Measured by its ability to cleave a fluorescent peptide substrate Pro-Phe-Arg-7-amido-4-methylcoumarin(PFR-AMC). The specific activity is >6,000 pmol/min/μg. (Activation description: The proenzyme needs to be activated by Thermolysin for an activated form)

### Endotoxin:

< 1.0 EU per μg of the protein as determined by the LAL method

### Stability:

Samples are stable for up to twelve months from date of receipt at -70 °C

**Predicted N terminal:** Pro 19

### Molecular Mass:

The recombinant mouse KLK1 comprises 254 amino acids and has a predicted molecular mass of 28.3 kDa. The apparent molecular mass of the protein is approximately 36 kDa in SDS-PAGE under reducing conditions.

### Formulation:

Lyophilized from sterile 25 mM Tris, 5 mM CaCl<sub>2</sub>, 0.15 M NaCl, pH 7.4.

Normally 5 % - 8 % trehalose, mannitol and 0.01% Tween80 are added as protectants before lyophilization. Specific concentrations are included in the hardcopy of COA. Please contact us for any concerns or special requirements.

## Usage Guide

### Storage:

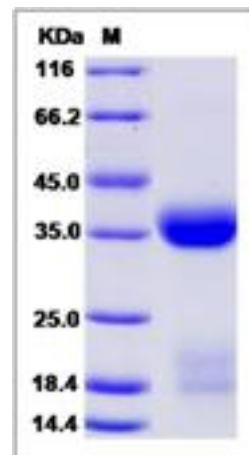
Store it under sterile conditions at -20°C to -80°C upon receiving. Recommend to aliquot the protein into smaller quantities for optimal storage.

Avoid repeated freeze-thaw cycles.

### Reconstitution:

Detailed reconstitution instructions are sent along with the products.

## SDS-PAGE:



Manufactured By Sino Biological Inc., FOR RESEARCH USE ONLY. NOT FOR USE IN HUMANS.

For US Customer: Fax: 267-657-0217 • Tel: 215-583-7898

Global Customer: Fax :+86-10-5862-8288 • Tel:+86-400-890-9989 • <http://www.sinobiological.com>