

NAALADL1 Antibody, Rabbit PAb, Antigen Affinity Purified



Sino Biological
Biological Solution Specialist

Catalog Number: 50937-RP02

GENERAL INFORMATION	
Immunogen:	Recombinant Mouse NAALADL1 protein (Catalog#50937-M07H)
Preparation	Produced in rabbits immunized with purified, recombinant Mouse NAALADL1 (rM NAALADL1; Catalog#50937-M07H; Q7M758; Pro29-Leu745). NAALADL1 specific IgG was purified by Mouse NAALADL1 affinity chromatography.
Ig Type:	Rabbit IgG
Specificity:	Mouse NAALADL1
Formulation:	0.2 µm filtered solution in PBS
Storage:	This antibody can be stored at 2°C-8°C for one month without detectable loss of activity. Antibody products are stable for twelve months from date of receipt when stored at -20°C to -80°C. Preservative-Free. Avoid repeated freeze-thaw cycles.
APPLICATIONS	
Applications:	ELISA,IHC-P
RECOMMENDED CONCENTRATION	
IHC-P	IHC-P: 1:500-1:2000
ELISA	ELISA: 1:5000-1:10000 This antibody can be used at 1:5000-1:10000 with the appropriate secondary reagents to detect Mouse NAALADL1 .

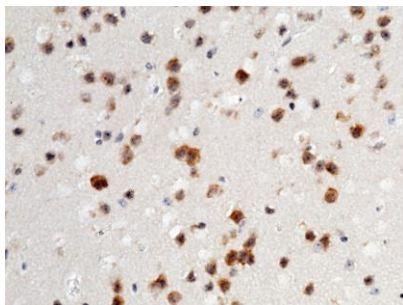
Please Note: Optimal concentrations/dilutions should be determined by the end user.

NAALADL1 Antibody, Rabbit PAb, Antigen Affinity Purified

Catalog Number: 50937-RP02



Sino Biological
Biological Solution Specialist



Immunohistochemical staining of mouse
NAALADL1 in mouse brain with rabbit
polyclonal antibody (1:1000, formalin-fixed
paraffin embedded sections).