

BACE2 / Beta secretase 2 Antibody, Rabbit PAb, Antigen Affinity Purified



Sino Biological
Biological Solution Specialist

Catalog Number: 51031-T24

GENERAL INFORMATION

Immunogen:	Recombinant Mouse BACE2 / Beta secretase 2 Protein (Catalog#51031-M08H)
Preparation	Produced in rabbits immunized with purified, recombinant Mouse BACE2 / Beta secretase 2 (rM BACE2 / Beta secretase 2; Catalog#51031-M08H; Q9JL18; Met1-Pro462). BACE2 / Beta secretase 2 specific IgG was purified by Mouse BACE2 / Beta secretase 2 affinity chromatography.
Ig Type:	Rabbit IgG
Specificity:	Mouse BACE2 / Beta secretase 2
Formulation:	0.2 µm filtered solution in PBS
Storage:	This antibody can be stored at 2°C-8°C for one month without detectable loss of activity. Antibody products are stable for twelve months from date of receipt when stored at -20°C to -80°C. Preservative-Free. Sodium azide is recommended to avoid contamination (final concentration 0.05%-0.1%). It is toxic to cells and should be disposed of properly. Avoid repeated freeze-thaw cycles.

APPLICATIONS

Applications:	ELISA, IHC-P
----------------------	--------------

RECOMMENDED CONCENTRATION

IHC-P	IHC-P: 1:500-1:2000
ELISA	ELISA: 1:5000-1:10000 This antibody can be used at 1:5000-1:10000 with the appropriate secondary reagents to detect Mouse BACE2 / Beta secretase 2.

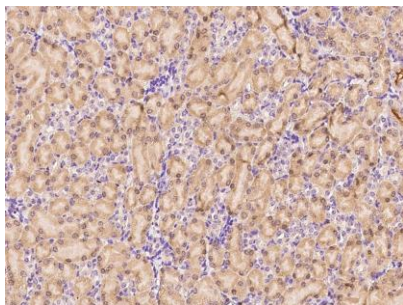
Please Note: Optimal concentrations/dilutions should be determined by the end user.

BACE2 / Beta secretase 2 Antibody, Rabbit PAb, Antigen Affinity Purified

Catalog Number: 51031-T24



Sino Biological
Biological Solution Specialist



Immunohistochemical staining of mouse BACE2 in mouse kidney with rabbit polyclonal antibody at 1:1000 dilution, formalin-fixed paraffin embedded sections.