

# Mouse IL1F8 / IL36b Protein

Catalog Number: 51071-MNAE



Sino Biological  
Biological Solution Specialist

## General Information

### Gene Name Synonym:

2310043N20Rik; IL36b; RP23-176J12.1

### Protein Construction:

A DNA sequence encoding the mouse IL1F8 (Q9D6Z6) (Met 1-Lys 183) was expressed.

**Source:** Mouse

**Expression Host:** E. coli

## QC Testing

**Purity:** > 96 % as determined by SDS-PAGE

### Endotoxin:

Please contact us for more information.

### Stability:

Samples are stable for up to twelve months from date of receipt at -70 °C

**Predicted N terminal:** Met

### Molecular Mass:

The recombinant mouse IL1F8 consisting of 183 amino acids and has a calculated molecular mass of 21 kDa as estimated in SDS-PAGE under reducing conditions.

### Formulation:

Lyophilized from sterile 50mM Tris, pH 8.0

Normally 5 % - 8 % trehalose, mannitol and 0.01% Tween80 are added as protectants before lyophilization. Specific concentrations are included in the hardcopy of COA. Please contact us for any concerns or special requirements.

## Usage Guide

### Storage:

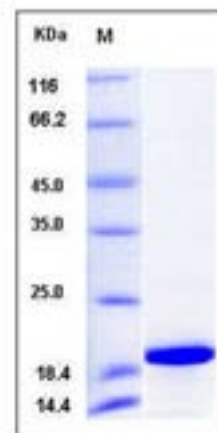
Store it under sterile conditions at -20°C to -80°C upon receiving. Recommend to aliquot the protein into smaller quantities for optimal storage.

**Avoid repeated freeze-thaw cycles.**

### Reconstitution:

Detailed reconstitution instructions are sent along with the products.

## SDS-PAGE:



## Protein Description

Interleukin-1 family member 8(IL1F8) also known as IL36B, is a member of the interleukin 1(IL-1) cytokine family. IL1F8 may contains a 12-stranded beta-trefoil structure. Until recently, the IL-1 family of cytokines include four members, with three having pro-inflammatory effects such as IL1F8 and the fourth member being an IL-1 receptor antagonist (IL-1Ra). IL-1 family members exert their effects through binding to receptors that belong to the IL-1 receptor (IL-1R) family. IL1F8 exerts proinflammatory effects in primary human joint cells. Joint and serum IL-1F8 protein levels did not correlate with inflammation, but they were high in some human serum samples tested, including samples from patients with rheumatoid arthritis. IL1F8 also activated NK-kB.

Manufactured By Sino Biological Inc., FOR RESEARCH USE ONLY. NOT FOR USE IN HUMANS.

For US Customer: Fax: 267-657-0217 • Tel: 215-583-7898

Global Customer: Fax :+86-10-5862-8288 • Tel:+86-400-890-9989 • <http://www.sinobiological.com>