

Mouse EphA3 Protein (Fc Tag)

Catalog Number: 51122-M02H



Sino Biological
Biological Solution Specialist

General Information

Gene Name Synonym:

AW492086; Cek4; End3; ETK1; Hek; Hek4; Mek4; Tyro4

Protein Construction:

A DNA sequence encoding the extracellular domain of mouse EPHA3 (NP_034270.1)(Met1-His541) was expressed with the Fc region of human IgG1 at the C-terminus.

Source: Mouse

Expression Host: HEK293 Cells

QC Testing

Purity: > 90 % as determined by SDS-PAGE

Bio Activity:

Measured by its binding ability in a functional ELISA. Immobilized mouse EFNA5-His (Cat:50597-M08H) at 10 µg/ml (100 µl/well) can bind mouse EPHA3-Fc. The EC₅₀ of rat mouse EPHA3-Fc is 12.3-28.9 ng/ml.

Endotoxin:

< 1.0 EU per µg of the protein as determined by the LAL method

Stability:

Samples are stable for up to twelve months from date of receipt at -70 °C

Predicted N terminal: Glu 21

Molecular Mass:

The recombinant mouse EPHA3/Fc comprises 762 amino acids and has a predicted molecular mass of 85.7 kDa. The apparent molecular mass of the protein is approximately 96 kDa in SDS-PAGE under reducing conditions.

Formulation:

Lyophilized from sterile PBS, pH 7.4.

Normally 5 % - 8 % trehalose, mannitol and 0.01% Tween80 are added as protectants before lyophilization. Specific concentrations are included in the hardcopy of COA. Please contact us for any concerns or special requirements.

Usage Guide

Storage:

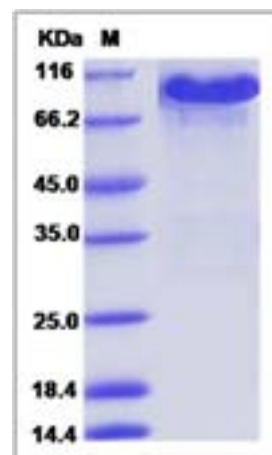
Store it under sterile conditions at -20°C to -80°C upon receiving. Recommend to aliquot the protein into smaller quantities for optimal storage.

Avoid repeated freeze-thaw cycles.

Reconstitution:

Detailed reconstitution instructions are sent along with the products.

SDS-PAGE:



Protein Description

EPHA3 gene belongs to the ephrin receptor subfamily of the protein-tyrosine kinase family. EPH and EPH-related receptors have been implicated in mediating developmental events, particularly in the nervous system. The ephrin receptors are divided into 2 groups based on the similarity of their extracellular domain sequences and their affinities for binding ephrin-A and ephrin-B ligands. EPHA3 gene encodes a protein that binds ephrin-A ligands. EPHA3 is involved in the retinotectal mapping of neurons. It may also control the segregation but not the guidance of motor and sensory axons during neuromuscular circuit development.

References

1. Holder N, *et al.* (1999) Eph receptors and ephrins: effectors of morphogenesis. *Development*. 126(10):2033-44.
2. Wilkinson DG. (2000) Eph receptors and ephrins: regulators of guidance and assembly. *Int Rev Cytol*. 196:177-244.
3. Xu Q, *et al.* (2001) Roles of Eph receptors and ephrins in segmental patterning. *Philos Trans R Soc Lond B Biol Sci*. 355(1399):993-1002.

Manufactured By Sino Biological Inc., FOR RESEARCH USE ONLY. NOT FOR USE IN HUMANS.

For US Customer: Fax: 267-657-0217 • Tel: 215-583-7898

Global Customer: Fax :+86-10-5862-8288 • Tel:+86-400-890-9989 • <http://www.sinobiological.com>