

# Mouse CDH13 / Cadherin-13 / H Cadherin Protein (His Tag)

Catalog Number: 51163-M08H



Sino Biological  
Biological Solution Specialist

## General Information

### Gene Name Synonym:

4932416G01Rik; Cdht; T-cadherin; Tcad

### Protein Construction:

A DNA sequence encoding the mouse Cdh13 (NP\_062681.2) (Met1-Ala692) was expressed with a polyhistidine tag at the C-terminus.

**Source:** Mouse

**Expression Host:** HEK293 Cells

## QC Testing

**Purity:** > 90 % as determined by SDS-PAGE

### Endotoxin:

< 1.0 EU per µg protein as determined by the LAL method.

**Predicted N terminal:** Asp 23

### Molecular Mass:

The recombinant mouse Cdh13 consists 681 amino acids and predicts a molecular mass of 75 kDa.

### Formulation:

Lyophilized from sterile PBS, pH7.4.

Normally 5 % - 8 % trehalose, mannitol and 0.01% Tween80 are added as protectants before lyophilization. Specific concentrations are included in the hardcopy of COA. Please contact us for any concerns or special requirements.

## Usage Guide

### Stability & Storage:

Samples are stable for twelve months from date of receipt at -20°C to -80°C.

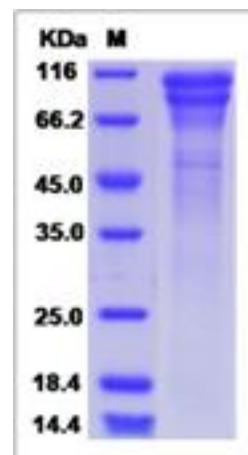
Store it under sterile conditions at -20°C to -80°C upon receiving. Recommend to aliquot the protein into smaller quantities for optimal storage.

**Avoid repeated freeze-thaw cycles.**

### Reconstitution:

Detailed reconstitution instructions are sent along with the products.

## SDS-PAGE:



## Protein Description

CDH13, also known as cadherin-13 and H Cadherin, is a member of the cadherin superfamily. CDH13 acts as a negative regulator of axon growth during neural differentiation. It also protects vascular endothelial cells from apoptosis due to oxidative stress, and is associated with resistance to atherosclerosis. CDH13 is localized to the surface of the cell membrane and is anchored by a GPI moiety, rather than by a transmembrane domain. CDH13 gene is hypermethylated in many types of cancer.

## References

- 1.Hart AB. et al., 2012, PLoS One. 7 (8): e42646.
- 2.Xu J. et al., 2012, BMC Cancer. 12: 243.
- 3.Jo J. et al., 2012, Obesity (Silver Spring). 20 (8): 1683-7.

**For Research Use Only. Not for use in diagnostic or therapeutic procedures.**

**Tel: +86-400-890-9989 (Global), +1-215-583-7898 (USA), +49(0)6196 9678656 (Europe)**

**Website: <http://www.sinobiological.com>**