

Mouse LDH-A / LDHA Protein (His Tag)

Catalog Number: 51207-M07E



Sino Biological
Biological Solution Specialist

General Information

Gene Name Synonym:

I7R2; Ldh1; Ldhm

Protein Construction:

A DNA sequence encoding the mouse Ldha (NP_034829.1) (Met1-Phe332) was expressed with a polyhistidine tag at the N-terminus.

Source: Mouse

Expression Host: E. coli

QC Testing

Purity: > 95 % as determined by SDS-PAGE.

Bio Activity:

Measured by its ability to reduce pyruvate to lactate. The specific activity is >50,000 pmoles/min/μg

Endotoxin:

Please contact us for more information.

Stability:

Samples are stable for up to twelve months from date of receipt at -70 °C

Predicted N terminal: Met

Molecular Mass:

The recombinant mouse Ldha consists 332 amino acids and predicts a molecular mass of 36.5 kDa.

Formulation:

Lyophilized from sterile PBS, 10 % Glycerol, pH 7.4.

Normally 5 % - 8 % trehalose, mannitol and 0.01% Tween80 are added as protectants before lyophilization. Specific concentrations are included in the hardcopy of COA. Please contact us for any concerns or special requirements.

Usage Guide

Storage:

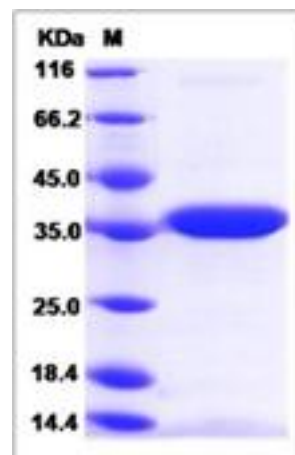
Store it under sterile conditions at -20°C to -80°C upon receiving. Recommend to aliquot the protein into smaller quantities for optimal storage.

Avoid repeated freeze-thaw cycles.

Reconstitution:

Detailed reconstitution instructions are sent along with the products.

SDS-PAGE:



Protein Description

Lactate dehydrogenase A (LDHA), a key enzyme regulating aerobic glycolysis, is overexpressed in many human cancers, and correlates with poor clinical outcomes. Lactate dehydrogenase-A (LDHA) can promote Warburg effect to produce lactate and Adenosine Triphosphate (ATP) in aerobic condition, which contributes to oncogenesis metastasis and drug resistance in various cancers. Up-regulation of lactate dehydrogenase LDHA, is a frequent event in human malignancies and relate to poor postoperative outcome.

Manufactured By Sino Biological Inc., FOR RESEARCH USE ONLY. NOT FOR USE IN HUMANS.

For US Customer: Fax: 267-657-0217 ● Tel: 215-583-7898

Global Customer: Fax :+86-10-5862-8288 ● Tel:+86-400-890-9989 ● <http://www.sinobiological.com>