

Mouse PLA2G2D / Phospholipase A2 IID Protein (Fc Tag)

Catalog Number: 5A1107-M02H



Sino Biological
Biological Solution Specialist

General Information

Gene Name Synonym:

Pla2a2, Splash

Protein Construction:

A DNA sequence encoding the mouse PLA2G2D (NP_035239.1) (Met1-Cys144) was expressed with the Fc region of human IgG1 at the C-terminus.

Source: Mouse

Expression Host: Human Cells

QC Testing

Purity: > 95 % as determined by SDS-PAGE.

Endotoxin:

<1.0 EU per µg protein as determined by the LAL method.

Stability:

Samples are stable for up to twelve months from date of receipt at -70 °C

Predicted N terminal: Gly 20

Molecular Mass:

The recombinant mouse PLA2G2D consists of 363 amino acids and predicts a molecular mass of 41 kDa.

Formulation:

Lyophilized from sterile PBS, 10 % glycerol, pH 7.4.

Normally 5 % - 8 % trehalose, mannitol and 0.01% Tween80 are added as protectants before lyophilization. Specific concentrations are included in the hardcopy of COA. Please contact us for any concerns or special requirements.

Usage Guide

Storage:

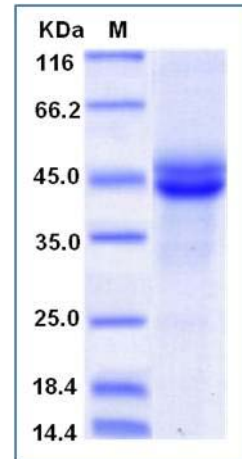
Store it under sterile conditions at -20°C to -80°C upon receiving. Recommend to aliquot the protein into smaller quantities for optimal storage.

Avoid repeated freeze-thaw cycles.

Reconstitution:

Detailed reconstitution instructions are sent along with the products.

SDS-PAGE:



Manufactured By Sino Biological Inc., FOR RESEARCH USE ONLY. NOT FOR USE IN HUMANS.

For US Customer: Fax: 267-657-0217 • Tel: 215-583-7898

Global Customer: Fax :+86-10-5862-8288 • Tel:+86-400-890-9989 • <http://www.sinobiological.com>