

ICAM-1 / CD54 Antibody, Rabbit MAb



Sino Biological
Biological Solution Specialist

Catalog Number: 80022-R037

EliteRmab® is a registered trademark of Sino Biological Inc.

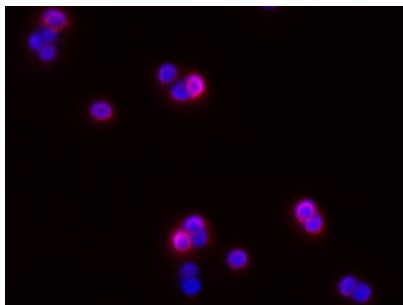
GENERAL INFORMATION	
Immunogen:	Recombinant Rat ICAM-1 / CD54 protein (Catalog#80022-R08H)
Preparation	This antibody was obtained from a rabbit immunized with purified, recombinant Rat ICAM-1 / CD54 (rR ICAM-1 / CD54; Catalog#80022-R08H; Q00238-1; Met1-Thr493).
Ig Type:	Rabbit IgG
Clone ID:	037
Specificity:	Rat ICAM-1 / CD54
Formulation:	0.2 µm filtered solution in PBS
Storage:	This antibody can be stored at 2°C-8°C for one month without detectable loss of activity. Antibody products are stable for twelve months from date of receipt when stored at -20°C to -80°C. Preservative-Free. Avoid repeated freeze-thaw cycles.
Alternative Names:	ICAM-1
APPLICATIONS	
Applications:	ELISA(Cap),FCM,ICC/IF
RECOMMENDED CONCENTRATION	
ICC/IF	ICC/IF: 1:20-1:100
Flow Cytometry	FCM: 1:25-1:100
Sandwich ELISA (Capture Ab)	ELISA(Cap): 1:250-1:2000 This antibody will detect Rat ICAM-1 / CD54 in ELISA pair set (Catalog: # SEK80022). In a sandwich ELISA, it can be used as capture antibody when paired with (Catalog: # 80022-R112).

Please Note: Optimal concentrations/dilutions should be determined by the end user.

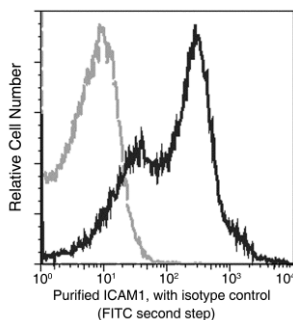


Catalog Number: 80022-R037

EliteRmab® is a registered trademark of Sino Biological Inc.



Immunofluorescence staining of rat ICAM1 in rat splenocytes. Cells were fixed with 4% PFA, blocked with 10% serum, and incubated with rabbit anti-rat ICAM1 monoclonal antibody (1:60) at 37°C 1 hour. Then cells were stained with the Alexa Fluor® 594-conjugated Goat Anti-rabbit IgG secondary antibody (red) and counterstained with DAPI (blue).



Flow cytometric analysis of Rat ICAM1 expression on SD rat splenocytes. Cells were stained with purified anti-Rat ICAM1, then a FITC-conjugated second step antibody. The fluorescence histograms were derived from gated events with the forward and side light-scatter characteristics of intact cells.

Flow cytometry was performed on a BD FACSCalibur flow cytometry system. Please refer to www.sinobiological.com/Flow-Cytometry-FACS-Protocols-a-750.html for technical protocols.