

# IL-1 beta Antibody, Rabbit MAb



Sino Biological  
Biological Solution Specialist

Catalog Number: 80023-R312

EliteRmab® is a registered trademark of Sino Biological Inc.

GENERAL INFORMATION	
Immunogen:	Recombinant Rat IL-1 beta Protein (Catalog#80023-RNAE)
Preparation	This antibody was obtained from a rabbit immunized with purified, recombinant Rat IL-1 beta (rR IL-1 beta; Catalog#80023-RNAE; Q63264-1; Val117-Ser268).
Ig Type:	Rabbit IgG
Clone ID:	312
Specificity:	Rat IL-1 beta
Formulation:	0.2 µm filtered solution in PBS
Storage:	This antibody can be stored at 2°C-8°C for one month without detectable loss of activity. Antibody products are stable for twelve months from date of receipt when stored at -20°C to -80°C. Preservative-Free. Sodium azide is recommended to avoid contamination (final concentration 0.05%-0.1%). It is toxic to cells and should be disposed of properly. Avoid repeated freeze-thaw cycles.
APPLICATIONS	
Applications:	WB, ELISA
RECOMMENDED CONCENTRATION	
Western Blot	WB: 1:500-1:2000
ELISA	ELISA: 1:5000-1:10000 This antibody can be used at 1:5000-1:10000 with the appropriate secondary reagents to detect Rat IL-1 beta.

**Please Note: Optimal concentrations/dilutions should be determined by the end user.**

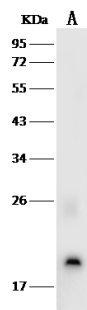
## IL-1 beta Antibody, Rabbit MAb



Sino Biological  
Biological Solution Specialist

Catalog Number: 80023-R312

EliteRmab® is a registered trademark of Sino Biological Inc.



Anti-IL1-beta rabbit monoclonal antibody at  
1:500 dilution

Lane A: Rat brain tissue lysate

Lysates/proteins at 30 µg per lane.

Secondary

Goat Anti-Rabbit IgG (H+L)/HRP at 1/10000  
dilution.

Developed using the ECL technique.

Performed under reducing conditions.

Predicted band size: 30 kDa