

Rat CXCL10 / Crg-2 Protein (His Tag)

Catalog Number: 80057-R08Y



Sino Biological
Biological Solution Specialist

General Information

Gene Name Synonym:

IP-10; Scyb10

Protein Construction:

A DNA sequence encoding the rat CXCL10 (NP_620789.1) (Ile22-Pro98) was expressed with a polyhistidine tag at the C-terminus.

Source: Rat

Expression Host: Yeast

QC Testing

Purity: > 95 % as determined by SDS-PAGE.

Endotoxin:

Please contact us for more information.

Stability:

Samples are stable for up to twelve months from date of receipt at -70 °C

Predicted N terminal: Ile 22

Molecular Mass:

The recombinant rat CXCL10 consists of 87 amino acids and predicts a molecular mass of 10 kDa.

Formulation:

Lyophilized from sterile PBS.PH7.4.

Normally 5 % - 8 % trehalose, mannitol and 0.01% Tween80 are added as protectants before lyophilization. Specific concentrations are included in the hardcopy of COA. Please contact us for any concerns or special requirements.

Usage Guide

Storage:

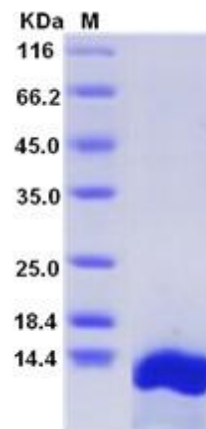
Store it under sterile conditions at -20°C to -80°C upon receiving. Recommend to aliquot the protein into smaller quantities for optimal storage.

Avoid repeated freeze-thaw cycles.

Reconstitution:

Detailed reconstitution instructions are sent along with the products.

SDS-PAGE:



Protein Description

CXCL10, also known as crg-2, is a chemokine of the CXC subfamily and ligand for the receptor CXCR3. CXC chemokines are particularly significant for leukocyte infiltration in inflammatory diseases. CXCL10 has a three-dimensional crystal structure. Its signaling is mediated by the G protein-coupled receptor CXCR3, which is expressed on activated T cells and plays an important role in directing the migration of T cells, especially during Th1 responses. Binding of CXCL10 to CXCR3 results in pleiotropic effects, including stimulation of monocytes, natural killer and T-cell migration, and modulation of adhesion molecule expression. It is chemotactic for monocytes and T-lymphocytes. CXCL10 can be secreted by several cell types in response to IFN- γ . Baseline pre-treatment plasma levels of CXCL10 are elevated in patients chronically infected with hepatitis C virus (HCV) of genotypes 1 or 4 who do not achieve a sustained viral response (SVR) after completion of antiviral therapy.

References

- 1.O'Donovan N, *et al.* (1999) Physical mapping of the CXC chemokine locus on human chromosome 4. *Cytogenet. Cell Genet.* 84(1-2):39-42.
- 2.Swaminathan GJ, *et al.* (2003) Crystal structures of oligomeric forms of the IP-10/CXCL10 chemokine. *Structure.* 11(5):521-32.
- 3.Booth V, *et al.* (2002) The CXCR3 binding chemokine IP-10/CXCL10: structure and receptor interactions. *Biochemistry.* 41(33):10418-25.

Manufactured By Sino Biological Inc., FOR RESEARCH USE ONLY. NOT FOR USE IN HUMANS.

For US Customer: Fax: 267-657-0217

• Tel: 215-583-7898

Global Customer: Fax :+86-10-5862-8288

• Tel:+86-400-890-9989

• <http://www.sinobiological.com>