

Rat IL20RB Protein (Fc Tag)

Catalog Number: 80187-R02H



Sino Biological
Biological Solution Specialist

General Information

Gene Name Synonym:

IL20RB

Protein Construction:

A DNA sequence encoding the rat IL20RB (B8K1X9) (Met1-Pro227) was expressed, fused with the Fc region of human IgG1 at the C-terminus.

Source: Rat

Expression Host: HEK293 Cells

QC Testing

Purity: > 70 % as determined by SDS-PAGE

Endotoxin:

< 1.0 EU per µg of the protein as determined by the LAL method

Stability:

Samples are stable for up to twelve months from date of receipt at -70 °C

Predicted N terminal: Phe 22

Molecular Mass:

The recombinant rat IL20RB/Fc is a disulfide-linked homodimer. The reduced monomer comprises 447 amino acids and has a predicted molecular mass of 50.2 kDa. The apparent molecular mass of the protein is approximately 61 kDa in SDS-PAGE under reducing conditions.

Formulation:

Lyophilized from sterile PBS, pH 7.4

Normally 5 % - 8 % trehalose, mannitol and 0.01% Tween80 are added as protectants before lyophilization. Specific concentrations are included in the hardcopy of COA. Please contact us for any concerns or special requirements.

Usage Guide

Storage:

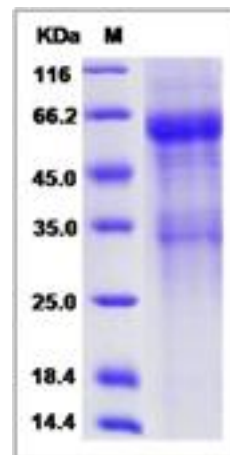
Store it under sterile conditions at -20°C to -80°C upon receiving. Recommend to aliquot the protein into smaller quantities for optimal storage.

Avoid repeated freeze-thaw cycles.

Reconstitution:

Detailed reconstitution instructions are sent along with the products.

SDS-PAGE:



Protein Description

IL20RB belongs to the type II cytokine receptor family. There are two kinds of type II cytokine receptors: cytokine receptors that bind type I and type II interferons; cytokine receptors that bind members of the interleukin-10 family (interleukin-10, interleukin-20 and interleukin-22). Type II cytokine receptors are similar to type I cytokine receptors except they do not possess the signature sequence WSXWS that is characteristic of type I receptors. They are expressed on the surface of certain cells, which bind and respond to a select group of cytokines. These receptors are related predominantly by sequence similarities in their extracellular portions that are composed of tandem Ig-like domains. The intracellular domain of type II cytokine receptors is typically associated with a tyrosine kinase belonging to the Janus kinase (JAK) family. IL20RB and IL20RA (MIM 605620) form a heterodimeric receptor for interleukin-20.

References

1. Zhu H, *et al.* (2009) Expression pattern of mda-7/IL-24 receptors in liver cancer cell lines. *Hepatobiliary Pancreat Dis Int.* 8(4):402-6.
2. Logsdon NJ, *et al.* (2012) Purification, crystallization and preliminary X-ray diffraction analysis of the IL-20-IL-20R1-IL-20R2 complex. *Acta Crystallogr Sect F Struct Biol Cryst Commun.* 68(Pt 1):89-92.
3. Kingo K, *et al.* (2008) Association analysis of IL20RA and IL20RB genes in psoriasis. *Genes Immun.* 9(5):445-51.

Manufactured By Sino Biological Inc., FOR RESEARCH USE ONLY. NOT FOR USE IN HUMANS.

For US Customer: Fax: 267-657-0217 • Tel: 215-583-7898

Global Customer: Fax :+86-10-5862-8288 • Tel:+86-400-890-9989 • <http://www.sinobiological.com>