



Catalog Number: 80222-R005

EliteRmab® is a registered trademark of Sino Biological Inc.

GENERAL INFORMATION

Immunogen:	Recombinant Rat BCAM / CD239 protein (Catalog#80222-R08H)
Preparation	This antibody was obtained from a rabbit immunized with purified, recombinant Rat BCAM / CD239 (rR BCAM / CD239; Catalog#80222-R08H; Q9ESS6; Met1-Ala543).
Ig Type:	Rabbit IgG
Clone ID:	005
Specificity:	Rat BCAM / CD239
Formulation:	0.2 µm filtered solution in PBS
Storage:	This antibody can be stored at 2°C-8°C for one month without detectable loss of activity. Antibody products are stable for twelve months from date of receipt when stored at -20°C to -80°C. Preservative-Free. Sodium azide is recommended to avoid contamination (final concentration 0.05%-0.1%). It is toxic to cells and should be disposed of properly. Avoid repeated freeze-thaw cycles.

APPLICATIONS

Applications:	IHC-P
----------------------	-------

RECOMMENDED CONCENTRATION

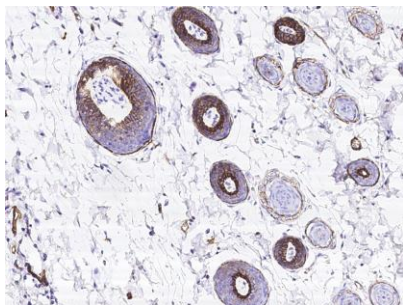
IHC-P	IHC-P: 1:100-1:500
--------------	--------------------

Please Note: Optimal concentrations/dilutions should be determined by the end user.

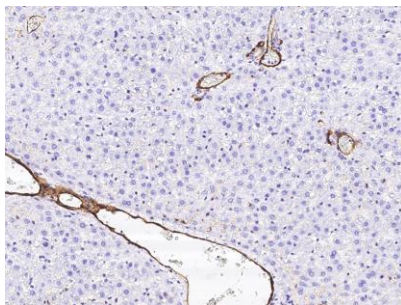


Catalog Number: 80222-R005

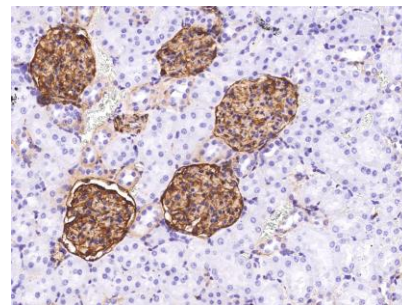
EliteRmab® is a registered trademark of Sino Biological Inc.



Immunohistochemical staining of rat BCAM in rat skin with rabbit monoclonal antibody (1:200, formalin-fixed paraffin embedded sections).



Immunohistochemical staining of rat BCAM in rat liver with rabbit monoclonal antibody (1:200, formalin-fixed paraffin embedded sections).



Immunohistochemical staining of rat BCAM in rat kidney with rabbit monoclonal antibody (1:200, formalin-fixed paraffin embedded sections).