

E-Cadherin / CDH1 / E-cad / CD324
Antibody, Rabbit PAb, Antigen
Affinity Purified

Catalog Number: 80274-T50



Sino Biological
Biological Solution Specialist

GENERAL INFORMATION

Immunogen:	Recombinant Rat E-Cadherin / CDH1 / E-cad / CD324 Protein (Catalog#80274-R08H)
Preparation	Produced in rabbits immunized with purified, recombinant Rat E-Cadherin / CDH1 / E-cad / CD324 (rR E-Cadherin / CDH1 / E-cad / CD324; Catalog#80274-R08H; Q9R0T4; Met1-Ala713). E-Cadherin / CDH1 / E-cad / CD324 specific IgG was purified by Rat E-Cadherin / CDH1 / E-cad / CD324 affinity chromatography.
Ig Type:	Rabbit IgG
Specificity:	Rat E-Cadherin / CDH1 / E-cad / CD324
Formulation:	0.2 µm filtered solution in PBS
Storage:	This antibody can be stored at 2°C-8°C for one month without detectable loss of activity. Antibody products are stable for twelve months from date of receipt when stored at -20°C to -80°C. Preservative-Free. Avoid repeated freeze-thaw cycles.
Alternative Names:	E-Cadherin,CDH1

APPLICATIONS

Applications:	WB,ELISA,ICC/IF
----------------------	-----------------

RECOMMENDED CONCENTRATION

ICC/IF	ICC/IF: 1:300-1:10000
Western Blot	WB: 1:500-1:2000
ELISA	ELISA: 1:5000-1:10000 This antibody can be used at 1:5000-1:10000 with the appropriate secondary reagents to detect Rat E-Cadherin / CDH1 / E-cad / CD324.

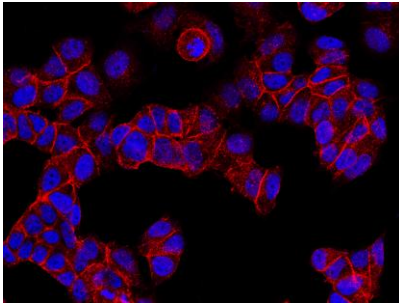
Please Note: Optimal concentrations/dilutions should be determined by the end user.

E-Cadherin / CDH1 / E-cad / CD324
Antibody, Rabbit PAb, Antigen
Affinity Purified

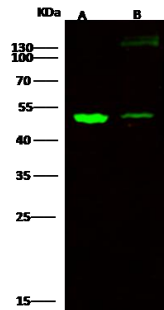
Catalog Number: 80274-T50



Sino Biological
Biological Solution Specialist



Immunofluorescence staining of CDH1 in MCF7 cells. Cells were fixed with 4% PFA, permeabilized with 0.3% Triton X-100 in PBS, blocked with 10% serum, and incubated with rabbit anti-rat CDH1 polyclonal antibody (1:1000) at 4°C overnight. Then cells were stained with the Alexa Fluor®594-conjugated Goat Anti-rabbit IgG secondary antibody (red) and counterstained with DAPI (blue). Positive staining was localized to cell membrane and cytoplasm.



Anti-CDH1 rabbit polyclonal antibody at 1:500 dilution

Lane A: MCF7 Whole Cell Lysate
Lane B: Caco-2 Whole Cell Lysate

Lysates/proteins at 30 µg per lane.

Secondary
Goat Anti- Rabbit IgG H&L (Dylight 800) at 1/10000 dilution.

Developed using the Odyssey technique.
Performed under reducing conditions.

Predicted band size:55 kDa
Observed band size:50 kDa