

# Rat IL12B / IL-12B Protein (Fc Tag)

Catalog Number: 80352-R02H



Sino Biological  
Biological Solution Specialist

## General Information

### Gene Name Synonym:

IL12B

### Protein Construction:

A DNA sequence encoding the rat Il12b (XP\_006246209.1) (Met1-Ser335) was expressed with the Fc region of human IgG1 at the C-terminus.

**Source:** Rat

**Expression Host:** HEK293 Cells

## QC Testing

**Purity:** > 85 % as determined by SDS-PAGE.

### Endotoxin:

< 1.0 EU per µg protein as determined by the LAL method.

### Stability:

Samples are stable for up to twelve months from date of receipt at -70 °C

**Predicted N terminal:** Met 23

### Molecular Mass:

The recombinant rat Il12b consists 551 amino acids and predicts a molecular mass of 62.5 kDa.

### Formulation:

Lyophilized from sterile PBS, pH 7.4.

Normally 5 % - 8 % trehalose, mannitol and 0.01% Tween80 are added as protectants before lyophilization. Specific concentrations are included in the hardcopy of COA. Please contact us for any concerns or special requirements.

## Usage Guide

### Storage:

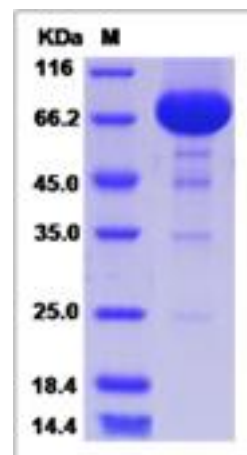
Store it under sterile conditions at -20°C to -80°C upon receiving. Recommend to aliquot the protein into smaller quantities for optimal storage.

**Avoid repeated freeze-thaw cycles.**

### Reconstitution:

Detailed reconstitution instructions are sent along with the products.

## SDS-PAGE:



## Protein Description

Subunit beta of interleukin 12 (also known as natural killer cell stimulatory factor 2, or cytotoxic lymphocyte maturation factor 2, p40) (IL12B) is a subunit of human interleukin 12. IL12B/IL-12B is a cytokine that acts on T and natural killer cells, and has a broad array of biological activities. Interleukin 12 is a disulfide-linked heterodimer composed of the 40 kD cytokine receptor like subunit encoded by this gene, and a 35 kD subunit encoded by IL12A. IL12B/IL-12B is expressed by activated macrophages that serve as an essential inducer of Th1 cells development. This cytokine has been found to be important for sustaining a sufficient number of memory/effector Th1 cells to mediate long-term protection to an intracellular pathogen. Overexpression of this gene was observed in the central nervous system of patients with multiple sclerosis (MS), suggesting a role of this cytokine in the pathogenesis of the disease. The promoter polymorphism of this gene has been reported to be associated with the severity of atopic and non-atopic asthma in children. IL12B/IL-12B associates with IL23A to form the IL-23 interleukin, an heterodimeric cytokine which functions in innate and adaptive immunity.

## References

- 1.Taoufik Y, *et al.* (1997) Human immunodeficiency virus gp120 inhibits interleukin-12 secretion by human monocytes: an indirect interleukin-10-mediated effect. *Blood*. 89 (8): 2842-8.
- 2.Fantuzzi L, *et al.* (1996) Induction of interleukin-12 (IL-12) by recombinant glycoprotein gp120 of human immunodeficiency virus type 1 in human monocytes/macrophages: requirement of gamma interferon for IL-12 secretion. *J Virol*. 70 (6): 4121-4.
- 3.Aragane Y, *et al.* (1995) IL-12 is expressed and released by human keratinocytes and epidermoid carcinoma cell lines. *J Immunol*. 153 (12): 5366-72.

Manufactured By Sino Biological Inc., FOR RESEARCH USE ONLY. NOT FOR USE IN HUMANS.

For US Customer: Fax: 267-657-0217 • Tel: 215-583-7898

Global Customer: Fax :+86-10-5862-8288 • Tel:+86-400-890-9989 • <http://www.sinobiological.com>