

# Rat CLM-9 / TREM4 / CD300LG Protein (His Tag)

Catalog Number: 80413-R08H



Sino Biological  
Biological Solution Specialist

## General Information

### Gene Name Synonym:

CD300LG

### Protein Construction:

A DNA sequence encoding the rat CD300LG (XP\_002724611.1) (Met1-Arg160) was expressed with a polyhistidine tag at the C-terminus.

**Source:** Rat

**Expression Host:** HEK293 Cells

## QC Testing

**Purity:** > 95 % as determined by SDS-PAGE

### Endotoxin:

< 1.0 EU per µg of the protein as determined by the LAL method

### Stability:

Samples are stable for up to twelve months from date of receipt at -70 °C

**Predicted N terminal:** Leu 19

### Molecular Mass:

The recombinant rat CD300LG comprises 153 amino acids and predicts a molecular mass of 17.5 kDa. The apparent molecular mass of the recombinant protein is approximately 28 kDa in SDS-PAGE under reducing conditions.

### Formulation:

Lyophilized from sterile PBS, pH 7.4.

Normally 5 % - 8 % trehalose, mannitol and 0.01% Tween80 are added as protectants before lyophilization. Specific concentrations are included in the hardcopy of COA. Please contact us for any concerns or special requirements.

## Usage Guide

### Storage:

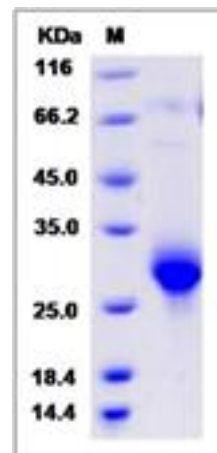
Store it under sterile conditions at -20°C to -80°C upon receiving. Recommend to aliquot the protein into smaller quantities for optimal storage.

**Avoid repeated freeze-thaw cycles.**

### Reconstitution:

Detailed reconstitution instructions are sent along with the products.

## SDS-PAGE:



## Protein Description

CLM-9, also known as TREM4, is a receptor which belongs to the TREM family. The TREM family of receptors regulates the activity of various cell types of the immune system including neutrophils, monocyte/macrophages, microglia, and dendritic cells. CLM-9 may mediate L-selectin-dependent lymphocyte rollings. It binds SELL in a calcium dependent manner. CLM-9 also binds lymphocyte which suggests that it functions in lymphocyte adhesion. The major CLM-9 transcript is expressed highly in human heart, skeletal muscle, and placenta. The mouse protein has been shown to be expressed in capillary endothelial cells. Human CLM-9 mediates the uptake of human IgA2 and mouse IgM.

## References

- 1.Clark GJ, *et al.* (2009) The CD300 molecules regulate monocyte and dendritic cell functions. *Immunobiology*. 214(9-10):730-6.
- 2.Engel K, *et al.* (2012) Bacterial expression of mutant argininosuccinate lyase reveals imperfect correlation of in-vitro enzyme activity with clinical phenotype in argininosuccinic aciduria. *J Inher Metab Dis*. 35(1):133-40.
- 3.Lamesch P, *et al.* (2007) hORFeome v3.1: a resource of human open reading frames representing over 10,000 human genes. *Genomics*. 89(3):307-15.

Manufactured By Sino Biological Inc., FOR RESEARCH USE ONLY. NOT FOR USE IN HUMANS.

For US Customer: Fax: 267-657-0217 • Tel: 215-583-7898

Global Customer: Fax :+86-10-5862-8288 • Tel:+86-400-890-9989 • <http://www.sinobiological.com>