

Cynomolgus PDGFB / PDGF-BB Protein (Fc Tag)

Catalog Number: 90030-C04H



Sino Biological
Biological Solution Specialist

General Information

Gene Name Synonym:

PDGFB

Protein Construction:

A DNA sequence encoding the cynomolgus PDGFB (EHH65851.1) (Ser82-Thr190) was expressed with the Fc region of mouse IgG1 at the N-terminus.

Source: Cynomolgus

Expression Host: HEK293 Cells

QC Testing

Purity: > 95 % as determined by SDS-PAGE

Bio Activity:

1. Measured in a cell proliferation assay using Balb/c 3T3 mouse embryonic fibroblasts. The ED₅₀ for this effect is typically 5-25 ng/ml. 2. Measured by its binding ability in a functional ELISA. Immobilized Cynomolgus PDGFRB-His (Cat:90215-C08H) at 10 µg/ml (100 µl/well) can bind Cynomolgus S4-mFc3-PDGFB, The EC₅₀ of Cynomolgus S4-mFc3-PDGFB is 3.6-7.4 ng/ml.

Endotoxin:

< 1.0 EU per µg of the protein as determined by the LAL method

Stability:

Samples are stable for up to twelve months from date of receipt at -70 °C

Predicted N terminal: Asp

Molecular Mass:

The recombinant cynomolgus PDGFB is a disulfide-linked homodimer. The reduced monomer comprises 345 amino acids and has a calculated molecular mass of 38.9 KDa. The apparent molecular mass of it is approximately 43 and 32 KDa in SDS-PAGE.

Formulation:

Lyophilized from sterile PBS, pH 7.4.

Normally 5 % - 8 % trehalose, mannitol and 0.01% Tween80 are added as protectants before lyophilization. Specific concentrations are included in the hardcopy of COA. Please contact us for any concerns or special requirements.

Usage Guide

Storage:

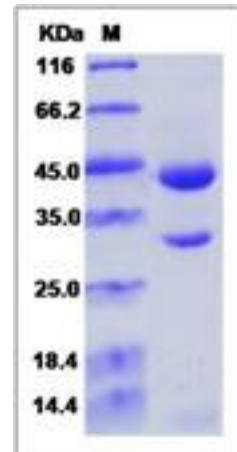
Store it under sterile conditions at -20°C to -80°C upon receiving. Recommend to aliquot the protein into smaller quantities for optimal storage.

Avoid repeated freeze-thaw cycles.

Reconstitution:

Detailed reconstitution instructions are sent along with the products.

SDS-PAGE:



Manufactured By Sino Biological Inc., FOR RESEARCH USE ONLY. NOT FOR USE IN HUMANS.

For US Customer: Fax: 267-657-0217 • Tel: 215-583-7898

Global Customer: Fax :+86-10-5862-8288 • Tel:+86-400-890-9989 • <http://www.sinobiological.com>