

# Rhesus EphB1 / EPHT2 Protein (Fc Tag)

Catalog Number: 90040-C02H



Sino Biological  
Biological Solution Specialist

## General Information

### Gene Name Synonym:

EphB1

### Protein Construction:

A DNA sequence encoding the rhesus EPHB1 (XP\_001115263.1) (Met1-Pro540) was expressed with the Fc region of human IgG1 at the C-terminus.

**Source:** Rhesus

**Expression Host:** HEK293 Cells

## QC Testing

**Purity:** > 85 % as determined by SDS-PAGE

### Bio Activity:

**Immobilized human EFNB1-His (Cat:10894-H08H at 10 µg/ml (100 µl/well) can bind Rhesus EPHB1-Fc, The EC<sub>50</sub> of Rhesus EPHB1-Fc is 24.5-57.3 ng/ml.**

### Endotoxin:

< 1.0 EU per µg of the protein as determined by the LAL method

### Stability:

Samples are stable for up to twelve months from date of receipt at -70 °C

**Predicted N terminal:** Met 18

### Molecular Mass:

The recombinant rhesus EPHB1 comprises 764 amino acids and has a calculated molecular mass of 85.4 KDa.

### Formulation:

Lyophilized from sterile PBS, pH 7.4.

Normally 5 % - 8 % trehalose, mannitol and 0.01% Tween80 are added as protectants before lyophilization. Specific concentrations are included in the hardcopy of COA. Please contact us for any concerns or special requirements.

## Usage Guide

### Storage:

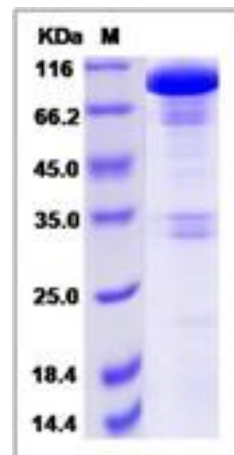
Store it under sterile conditions at -20°C to -80°C upon receiving. Recommend to aliquot the protein into smaller quantities for optimal storage.

**Avoid repeated freeze-thaw cycles.**

### Reconstitution:

Detailed reconstitution instructions are sent along with the products.

## SDS-PAGE:



## Protein Description

Ephrin type-B receptor 1, also known as EphB1, belongs to the ephrin receptor subfamily of the protein-tyrosine kinase family which 16 known receptors (14 found in mammals) are involved: EPHA1, EPHA2, EPHA3, EPHA4, EPHA5, EPHA6, EPHA7, EPHA8, EPHA9, EPHA10, EPHB1, EPHB2, EPHB3, EPHB4, EPHB5, EPHB6. EphB2 receptor tyrosine kinase phosphorylates syndecan-2 and that this phosphorylation event is crucial for syndecan-2 clustering and spine formation. The Eph family of receptor tyrosine kinases (comprising EphA and EphB receptors) has been implicated in synapse formation and the regulation of synaptic function and plasticity<sup>6</sup>. Ephrin receptors are components of cell signalling pathways involved in animal growth and development, forming the largest sub-family of receptor tyrosine kinases (RTKs). Ligand-mediated activation of Ephs induce various important downstream effects and Eph receptors have been studied for their potential roles in the development of cancer. EphB receptor tyrosine kinases are enriched at synapses, suggesting that these receptors play a role in synapse formation or function. We find that EphrinB binding to EphB induces a direct interaction of EphB with NMDA-type glutamate receptors. This interaction occurs at the cell surface and is mediated by the extracellular regions of the two receptors, but does not require the kinase activity of EphB.

## References

1. Dalva MB, *et al.* (2000) EphB receptors interact with NMDA receptors and regulate excitatory synapse formation. *Cell*. 103(6): 945-56.
2. Takasu MA, *et al.* (2002) Modulation of NMDA receptor-dependent calcium influx and gene expression through EphB receptors. *Science*. 295(5554): 491-5.
3. Adams RH, *et al.* (1999) Roles of ephrinB ligands and EphB receptors in cardiovascular development: demarcation of arterial/venous domains, vascular morphogenesis, and sprouting angiogenesis. *Genes Dev*. 13(3): 295-306.

Manufactured By Sino Biological Inc., FOR RESEARCH USE ONLY. NOT FOR USE IN HUMANS.

For US Customer: Fax: 267-657-0217 • Tel: 215-583-7898

Global Customer: Fax :+86-10-5862-8288 • Tel:+86-400-890-9989 • <http://www.sinobiological.com>