

Rhesus IL17BR / IL17RB / IL-17 Receptor B Protein (Fc Tag)

Catalog Number: 90140-C02H



Sino Biological
Biological Solution Specialist

General Information

Gene Name Synonym:

IL17RB

Protein Construction:

A DNA sequence encoding the rhesus IL17RB (EHH16291.1) (Met1-Gly288) was expressed with the Fc region of human IgG1 at the C-terminus.

Source: Rhesus

Expression Host: HEK293 Cells

QC Testing

Purity: > 85 % as determined by SDS-PAGE.

Endotoxin:

< 1.0 EU per µg protein as determined by the LAL method.

Stability:

Samples are stable for up to twelve months from date of receipt at -70 °C

Predicted N terminal: Arg 18

Molecular Mass:

The recombinant rhesus IL17RB consists of 512 amino acids and predicts a molecular mass of 57 kDa.

Formulation:

Lyophilized from sterile PBS, pH 7.4.

Normally 5 % - 8 % trehalose, mannitol and 0.01% Tween80 are added as protectants before lyophilization. Specific concentrations are included in the hardcopy of COA. Please contact us for any concerns or special requirements.

Usage Guide

Storage:

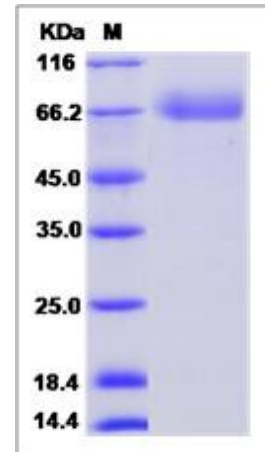
Store it under sterile conditions at -20°C to -80°C upon receiving. Recommend to aliquot the protein into smaller quantities for optimal storage.

Avoid repeated freeze-thaw cycles.

Reconstitution:

Detailed reconstitution instructions are sent along with the products.

SDS-PAGE:



References

1. Rickel EA, *et al.* (2008) Identification of functional roles for both IL-17RB and IL-17RA in mediating IL-25-induced activities. *J Immunol.* 181(6): 4299-310. 2. Stock P, *et al.* (2009) Induction of airway hyperreactivity by IL-25 is dependent on a subset of invariant NKT cells expressing IL-17RB. *J Immunol.* 182(8): 5116-22. 3. Wang H, *et al.* (2010) Allergen challenge of peripheral blood mononuclear cells from patients with seasonal allergic rhinitis increases IL-17RB, which regulates basophil apoptosis and degranulation. *Clin Exp Allergy.* 40(8): 1194-202.

Manufactured By Sino Biological Inc., FOR RESEARCH USE ONLY. NOT FOR USE IN HUMANS.

For US Customer: Fax: 267-657-0217 • Tel: 215-583-7898

Global Customer: Fax :+86-10-5862-8288 • Tel:+86-400-890-9989 • <http://www.sinobiological.com>