

PD1/PDCD1/CD279 Antibody, Rabbit PAb, Antigen Affinity Purified



Sino Biological
Biological Solution Specialist

Catalog Number: 90305-T24

GENERAL INFORMATION	
Immunogen:	Recombinant Rhesus PD1/PDCD1/CD279 Protein (Catalog#90305-K08H)
Preparation	Produced in rabbits immunized with purified, recombinant Rhesus PD1/PDCD1/CD279 (Catalog#90305-K08H; NP_001107830.1; Met1-Gln167). PD1/PDCD1/CD279 specific IgG was purified by Rhesus PD1/PDCD1/CD279 affinity chromatography.
Ig Type:	Rabbit IgG
Specificity:	Rhesus PD1/PDCD1/CD279
Formulation:	PBS, pH7.0 with 0.03% Proclin300
Storage:	This antibody can be stored at 2°C-8°C for one month without detectable loss of activity. Antibody products are stable for twelve months from date of receipt when stored at -20°C to -80°C. Avoid repeated freeze-thaw cycles.
APPLICATIONS	
Applications:	ELISA,IHC-P
RECOMMENDED CONCENTRATION	
IHC-P	IHC-P: 1:200-1:1000
ELISA	ELISA: 1:5000-1:10000 This antibody can be used at 1:5000-1:10000 with the appropriate secondary reagents to detect Rhesus PD1/PDCD1/CD279.

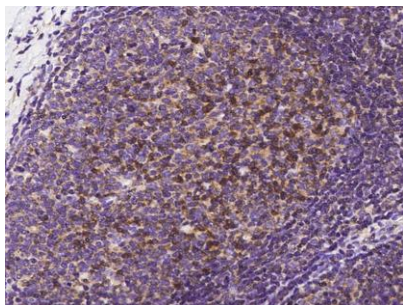
Please Note: Optimal concentrations/dilutions should be determined by the end user.

PD1/PDCD1/CD279 Antibody, Rabbit PAb, Antigen Affinity Purified

Catalog Number: 90305-T24



Sino Biological
Biological Solution Specialist



Immunohistochemical staining of rhesus PDCD1 in cynomolgus tonsil with rabbit polyclonal antibody at 1:300 dilution, formalin-fixed paraffin embedded sections.