

Rhesus IL-12 (IL12A & IL12B Heterodimer) Protein

Catalog Number: CT045-C08H



Sino Biological
Biological Solution Specialist

General Information

Gene Name Synonym:

IL12A & IL12B

Protein Construction:

A DNA sequence encoding the rhesus IL12A (NP_001038199.1) (Met1-Ser219) was fused with a polyhistidine tag at the C-terminus, constructed the plasmid 1; A DNA sequence encoding the rhesus IL12B (NP_001038190.1) (Met1-Ser328) was expressed with a polyhistidine tag at the C-terminus, constructed the plasmid 2. The two plasmids were co-expressed and the rhesus IL12A & the rhesus IL12B heterodimer was purified.

Source: Rhesus

Expression Host: HEK293 Cells

QC Testing

Purity: (23.1+26.7+49.4) % as determined by SDS-PAGE

Endotoxin:

< 1.0 EU per µg of the protein as determined by the LAL method

Stability:

Samples are stable for up to twelve months from date of receipt at -70 °C

Predicted N terminal: Arg 23 & Ile 23

Molecular Mass:

The recombinant rhesus IL12A & the rhesus IL12B comprises 525(208+317) amino acids and has a calculated molecular mass of 60.2(24+36.2) KDa.

Formulation:

Lyophilized from sterile PBS, pH 7.4.

Normally 5 % - 8 % trehalose, mannitol and 0.01% Tween80 are added as protectants before lyophilization. Specific concentrations are included in the hardcopy of COA. Please contact us for any concerns or special requirements.

Usage Guide

Storage:

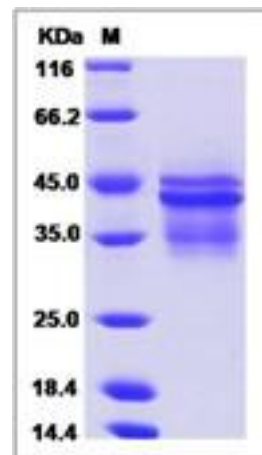
Store it under sterile conditions at -20°C to -80°C upon receiving. Recommend to aliquot the protein into smaller quantities for optimal storage.

Avoid repeated freeze-thaw cycles.

Reconstitution:

Detailed reconstitution instructions are sent along with the products.

SDS-PAGE:



Manufactured By Sino Biological Inc., FOR RESEARCH USE ONLY. NOT FOR USE IN HUMANS.

For US Customer: Fax: 267-657-0217 • Tel: 215-583-7898

Global Customer: Fax :+86-10-5862-8288 • Tel:+86-400-890-9989 • <http://www.sinobiological.com>