

# Human IL-12 Protein (IL12A & IL12B Heterodimer) Protein (His Tag)

Catalog Number: CT050-H08H



Sino Biological  
Biological Solution Specialist

## General Information

### Gene Name Synonym:

CLMF; CLMF2; IL-12A; IL-12B; IL12; IL12 p70; IMD28; IMD29; NFSK; NKSF; NKSF1; NKSF2; P35

### Protein Construction:

A DNA sequence encoding the human IL12 complex composed of IL12B (NP\_002178.2) ( Met1-Ser328) and the mature form of human IL12A ( NP\_000873.2)( Arg 23 - Ser 219 ) linked by a polypeptide linker was fused with a polyhistidine tag at the C-terminus.

**Source:** Human

**Expression Host:** HEK293 Cells

## QC Testing

**Purity:** > 95 % as determined by SDS-PAGE.

### Endotoxin:

< 1.0 EU per µg protein as determined by the LAL method.

### Stability:

Samples are stable for up to twelve months from date of receipt at -70 °C

**Predicted N terminal:** Ile 23

### Molecular Mass:

The recombinant human consists 529 amino acids and predicts a molecular mass of 59.6 kDa.

### Formulation:

Lyophilized from sterile PBS, pH 7.4

Normally 5 % - 8 % trehalose, mannitol and 0.01% Tween80 are added as protectants before lyophilization. Specific concentrations are included in the hardcopy of COA. Please contact us for any concerns or special requirements.

## Usage Guide

### Storage:

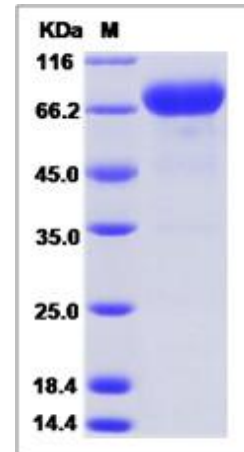
Store it under sterile conditions at -20°C to -80°C upon receiving. Recommend to aliquot the protein into smaller quantities for optimal storage.

**Avoid repeated freeze-thaw cycles.**

### Reconstitution:

Detailed reconstitution instructions are sent along with the products.

## SDS-PAGE:



Manufactured By Sino Biological Inc., FOR RESEARCH USE ONLY. NOT FOR USE IN HUMANS.

For US Customer: Fax: 267-657-0217 • Tel: 215-583-7898

Global Customer: Fax :+86-10-5862-8288 • Tel:+86-400-890-9989 • <http://www.sinobiological.com>