

Neuropilin-1 / NRP1 / CD304 Antibody, Rabbit MAb



Sino Biological
Biological Solution Specialist

Catalog Number: 10011-R042

EliteRmab® is a registered trademark of Sino Biological Inc.

GENERAL INFORMATION	
Immunogen:	Recombinant Human Neuropilin-1 / NRP1 / CD304 protein (Catalog#10011-H08H)
Preparation	This antibody was obtained from a rabbit immunized with purified, recombinant Human Neuropilin-1 / NRP1 / CD304 (rh Neuropilin-1 / NRP1 / CD304; Catalog#10011-H08H; NP_001019799.1; Met1-Lys644).
Ig Type:	Rabbit IgG
Clone ID:	042
Specificity:	Human Neuropilin-1 / NRP1 / CD304
	No cross-reactivity in ELISA with Human NRP2
Formulation:	0.2 µm filtered solution in PBS
Storage:	This antibody can be stored at 2°C-8°C for one month without detectable loss of activity. Antibody products are stable for twelve months from date of receipt when stored at -20°C to -80°C. Preservative-Free. Sodium azide is recommended to avoid contamination (final concentration 0.05%-0.1%). It is toxic to cells and should be disposed of properly. Avoid repeated freeze-thaw cycles.
APPLICATIONS	
Applications:	ELISA, IHC-P
RECOMMENDED CONCENTRATION	
IHC-P	IHC-P: 1:50-1:200
ELISA	ELISA: 1:5000-1:10000 This antibody can be used at 1:5000-1:10000 with the appropriate secondary reagents to detect Human Neuropilin-1 / NRP1 / CD304.

Please Note: Optimal concentrations/dilutions should be determined by the end user.

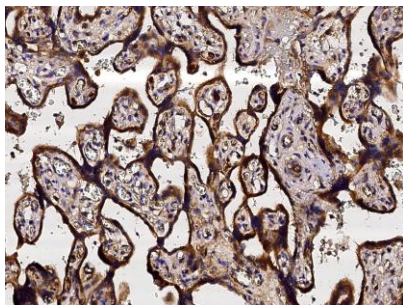
Neuropilin-1 / NRP1 / CD304 Antibody, Rabbit MAb

Catalog Number: 10011-R042

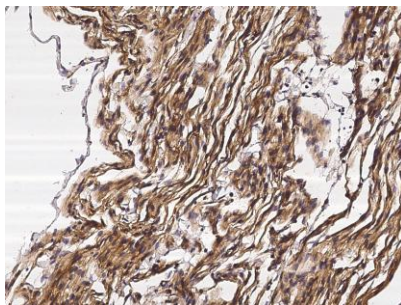


Sino Biological
Biological Solution Specialist

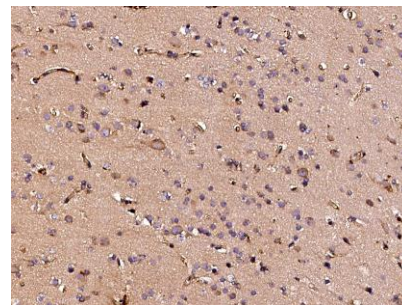
EliteRmab® is a registered trademark of Sino Biological Inc.



Immunohistochemical staining of human NRP1 in human placenta with rabbit monoclonal antibody (1:100, formalin-fixed paraffin embedded sections).



Immunohistochemical staining of human NRP1 in human heart with rabbit monoclonal antibody (1:100, formalin-fixed paraffin embedded sections).



Immunohistochemical staining of human NRP1 in human brain with rabbit monoclonal antibody (1:100, formalin-fixed paraffin embedded sections).