

# Ki67 / MKI67 Antibody, Mouse MAb



Sino Biological  
Biological Solution Specialist

Catalog Number: 100130-MM22

## GENERAL INFORMATION

<b>Immunogen:</b>	A synthetic peptide corresponding to the center region of the Human Ki67 / MKI67
<b>Preparation</b>	This antibody was produced from a hybridoma resulting from the fusion of a mouse myeloma with B cells obtained from a mouse immunized with a synthetic peptide corresponding to the center region of the Human Ki67 / MKI67. The IgG fraction of the cell culture supernatant was purified by Protein A affinity chromatography.
<b>Ig Type:</b>	Mouse IgG1
<b>Clone ID:</b>	22
<b>Specificity:</b>	Human Ki67 / MKI67
<b>Formulation:</b>	0.2 µm filtered solution in PBS with 10% Trehalose, pH7.0
<b>Storage:</b>	This antibody can be stored at 2°C-8°C for one month without detectable loss of activity. Antibody products are stable for twelve months from date of receipt when stored at -20°C to -80°C. Preservative-Free. Avoid repeated freeze-thaw cycles.

## APPLICATIONS

<b>Applications:</b>	IHC-P
----------------------	-------

## RECOMMENDED CONCENTRATION

<b>IHC-P</b>	IHC-P: 1:100-1:500
--------------	--------------------

**Please Note:** Optimal concentrations/dilutions should be determined by the end user.

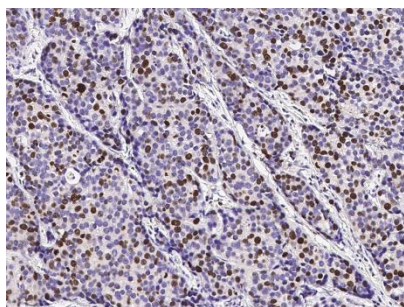
## Ki67 / MKI67 Antibody, Mouse MAb



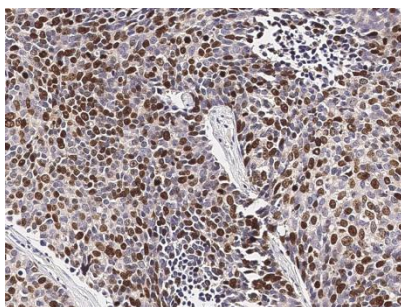
Sino Biological  
Biological Solution Specialist

Catalog Number: 100130-MM22

---



Immunohistochemical staining of human Ki-67 in human breast carcinoma with mouse monoclonal antibody (1:200, formalin-fixed paraffin embedded sections).



Immunohistochemical staining of human Ki-67 in human lung cancer with mouse monoclonal antibody (1:200, formalin-fixed paraffin embedded sections).