

# beta Actin / ACTB Antibody, Rabbit PAb, Antigen Affinity Purified



Sino Biological  
Biological Solution Specialist

Catalog Number: 100166-T36

## GENERAL INFORMATION

<b>Immunogen:</b>	A synthetic peptide corresponding to the N-terminus of the Human beta Actin / ACTB
<b>Preparation</b>	Produced in rabbits immunized with a synthetic peptide corresponding to the N-terminus of the Human beta Actin / ACTB, and purified by antigen affinity chromatography.
<b>Ig Type:</b>	Rabbit IgG
<b>Specificity:</b>	Human beta Actin / ACTB
<b>Formulation:</b>	0.2 µm filtered solution in PBS
<b>Storage:</b>	This antibody can be stored at 2°C-8°C for one month without detectable loss of activity. Antibody products are stable for twelve months from date of receipt when stored at -20°C to -80°C. Preservative-Free. Sodium azide is recommended to avoid contamination (final concentration 0.05%-0.1%). It is toxic to cells and should be disposed of properly. Avoid repeated freeze-thaw cycles.

## APPLICATIONS

<b>Applications:</b>	WB, IP
----------------------	--------

## RECOMMENDED CONCENTRATION

<b>Western Blot</b>	WB: 1:500-1:2000
<b>Immunoprecipitation</b>	IP: 1-4 µL/mg of lysate

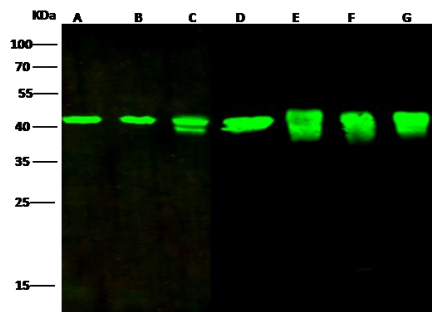
**Please Note:** Optimal concentrations/dilutions should be determined by the end user.

# beta Actin / ACTB Antibody, Rabbit PAb, Antigen Affinity Purified



Sino Biological  
Biological Solution Specialist

Catalog Number: 100166-T36



Anti-ACTB/beta-actin rabbit polyclonal antibody at 1:200 dilution

Lane A: HepG2 whole cell lysate

Lane B: Jurkat whole cell lysate

Lane C: MCF7 whole cell lysate

Lane D: Mouse brain tissue lysate

Lane E: Rabbit brain tissue lysate

Lane F: Rabbite spleen tissue lysate

Lane G: Rat brain tissue lysate

Lysates/proteins at 30 µg per lane.

Secondary

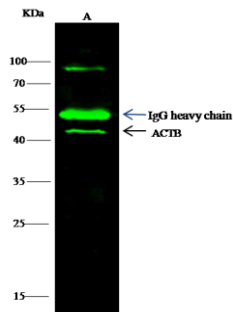
Goat Anti-Rabbit IgG H&L (Dylight800) at 1/10000 dilution.

Developed using the Odyssey technique.

Performed under reducing conditions.

Predicted band size:42 kDa

Observed band size:42 kDa



ACTB was immunoprecipitated using:

Lane A:0.5 mg Jurkat Whole Cell Lysate

2 µL anti-ACTB rabbit polyclonal antibody and 60 µg of Immunomagnetic beads Protein G.

Primary antibody:

Anti-ACTB rabbit polyclonal antibody,at 1:100 dilution

Secondary antibody:

Dylight 800-labeled antibody to rabbit IgG (H+L), at 1:5000 dilution

Developed using the odssey technique.

Performed under reducing conditions.

Predicted band size: 42 kDa

Observed band size: 42 kDa