

GAPDH Antibody, Rabbit PAb, Antigen Affinity Purified



Sino Biological
Biological Solution Specialist

Catalog Number: 100242-T40

GENERAL INFORMATION

Immunogen:	A synthetic peptide corresponding to the center region of the human GAPDH
Preparation	Produced in rabbits immunized with A synthetic peptide corresponding to the center region of the human GAPDH, and purified by antigen affinity chromatography.
Ig Type:	Rabbit IgG
Specificity:	Human GAPDH
Formulation:	0.2 µm filtered solution in PBS
Storage:	This antibody can be stored at 2°C-8°C for one month without detectable loss of activity. Antibody products are stable for twelve months from date of receipt when stored at -20°C to -80°C. Preservative-Free. Sodium azide is recommended to avoid contamination (final concentration 0.05%-0.1%). It is toxic to cells and should be disposed of properly. Avoid repeated freeze-thaw cycles.

APPLICATIONS

Applications:	WB, IHC-P
----------------------	-----------

RECOMMENDED CONCENTRATION

IHC-P	IHC-P: 1:500-1:2000
Western Blot	WB: 1:500-1:2000

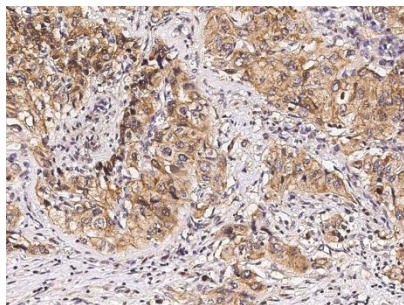
Please Note: Optimal concentrations/dilutions should be determined by the end user.

GAPDH Antibody, Rabbit PAb, Antigen Affinity Purified

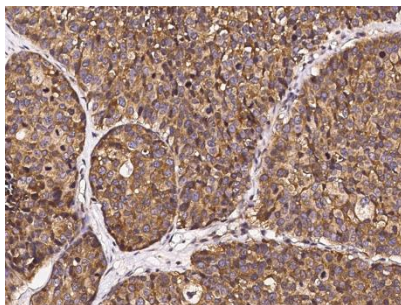
Catalog Number: 100242-T40



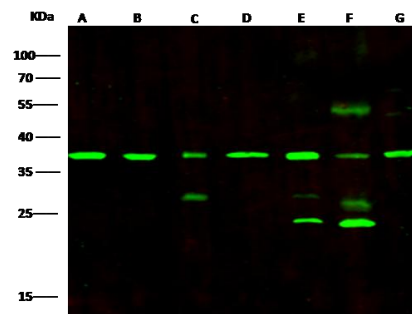
Sino Biological
Biological Solution Specialist



Immunohistochemical staining of human GAPDH in human renal carcinoma with rabbit polyclonal antibody (1:1000, formalin-fixed paraffin embedded sections).



Immunohistochemical staining of human GAPDH in human breast carcinoma with rabbit polyclonal antibody (1:1000, formalin-fixed paraffin embedded sections).



Anti-GAPDH rabbit polyclonal antibody at 1:500 dilution

Lane A: Jurkat Whole Cell Lysate
Lane B: MCF7 Whole Cell Lysate
Lane C: Mouse brain Tissue Lysate
Lane D: Rat brain Tissue Lysate
Lane E: Rabbit brain Tissue Lysate
Lane F: Rabbit spleen Tissue Lysate
Lane G: K562 Whole Cell Lysate

Lysates/proteins at 30 µg per lane.

Secondary

Goat Anti-Rabbit IgG H&L (Dylight800) at 1/10000 dilution.

Developed using the Odyssey technique.

Performed under reducing conditions.

Predicted band size: 36 kDa

Observed band size: 37 kDa

(We are unsure as to the identity of these extra bands.)