

**Progesterone receptor / PGR  
Antibody, Rabbit PAb, Antigen  
Affinity Purified**

Catalog Number: 100362-T10



Sino Biological  
Biological Solution Specialist

**GENERAL INFORMATION**

<b>Immunogen:</b>	A synthetic peptide corresponding to the center region of the Human Progesterone receptor / PGR
<b>Preparation</b>	Produced in rabbits immunized with a synthetic peptide corresponding to the center region of the Human Progesterone receptor / PGR, and purified by antigen affinity chromatography.
<b>Ig Type:</b>	Rabbit IgG
<b>Specificity:</b>	Human Progesterone receptor / PGR
<b>Formulation:</b>	0.2 µm filtered solution in PBS
<b>Storage:</b>	This antibody can be stored at 2°C-8°C for one month without detectable loss of activity. Antibody products are stable for twelve months from date of receipt when stored at -20°C to -80°C. Preservative-Free. Avoid repeated freeze-thaw cycles.
<b>Alternative Names:</b>	NR3C3,PR

**APPLICATIONS**

<b>Applications:</b>	IHC-P, ICC/IF
----------------------	---------------

**RECOMMENDED CONCENTRATION**

<b>IHC-P</b>	IHC-P: 1:1000-1:4000
<b>ICC/IF</b>	ICC/IF: 1:300-1:10000

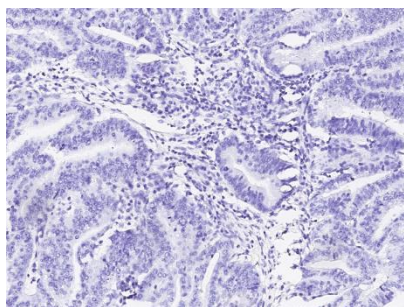
***Please Note: Optimal concentrations/dilutions should be determined by the end user.***

# Progesterone receptor / PGR Antibody, Rabbit PAb, Antigen Affinity Purified

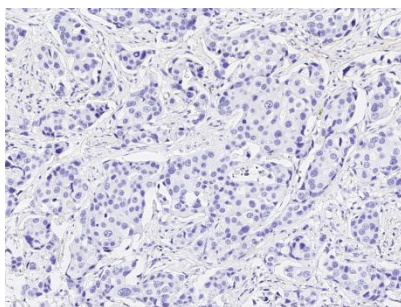
Catalog Number: 100362-T10



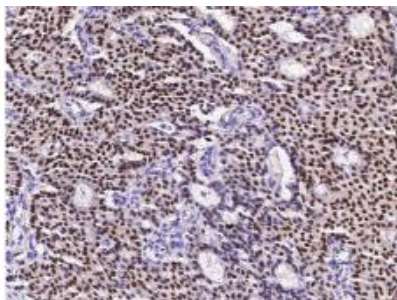
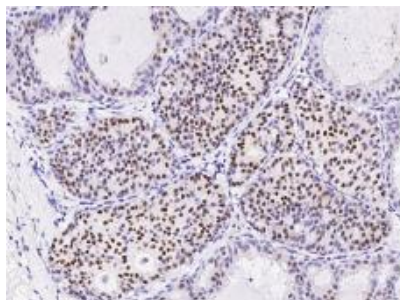
Sino Biological  
Biological Solution Specialist



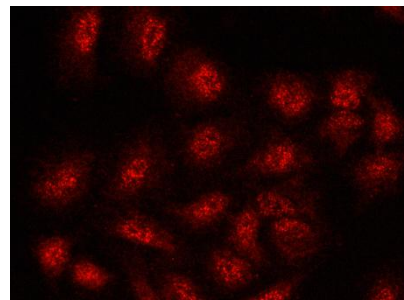
Immunohistochemical staining of human PGR in human endometrial cancer with rabbit polyclonal antibody (1:2000, formalin-fixed paraffin embedded sections).



Immunohistochemical staining of human PGR in human breast carcinoma with rabbit polyclonal antibody (1:2000, formalin-fixed paraffin embedded sections).



Immunohistochemical staining of human PGR in human breast carcinoma (from 2 donors) with rabbit polyclonal antibody (1:2000, formalin-fixed paraffin embedded sections).



Immunofluorescence staining of PGR in A549 cells. Cells were fixed with 4% PFA, blocked with 10% serum, and incubated with rabbit anti-human PGR polyclonal antibody (1:1000) at 4°C overnight. Then cells were stained with the Alexa Fluor®594-conjugated Goat Anti-rabbit IgG secondary antibody (red). Positive staining was localized to cytoplasm and nucleus.