

# Glypican 3 / GPC3 / OCI-5 Antibody (FITC), Rabbit MAb

Catalog Number: 100393-R024-F



Sino Biological  
Biological Solution Specialist

EliteRmab® is a registered trademark of Sino Biological Inc.

## GENERAL INFORMATION

<b>Immunogen:</b>	A synthetic peptide corresponding to the center region of the Human Glypican 3 / GPC3 / OCI-5
<b>Reagents:</b>	FITC-conjugated Rabbit monoclonal antibody
<b>Preparation</b>	This antibody was obtained from a rabbit immunized with a synthetic peptide corresponding to the center region of the Human Glypican 3 / GPC3 / OCI-5, and it was conjugated with FITC under optimum conditions, the unreacted FITC was removed.
<b>Ig Type:</b>	Rabbit IgG
<b>Clone ID:</b>	024
<b>Specificity:</b>	Human Glypican 3 / GPC3 / OCI-5
<b>Concentration:</b>	5 µl/Test, 0.1 mg/ml
<b>Formulation:</b>	PBS solution containing 0.5% BSA and 0.03%ProClin300
<b>Storage:</b>	This antibody can be stored at 2℃-8℃ for twelve months without detectable loss of activity. Protected from prolonged exposure to light. Do not freeze !
<b>Alternative Names:</b>	GPC3

## APPLICATIONS

<b>Applications:</b>	FCM
----------------------	-----

## RECOMMENDED CONCENTRATION

*Please Note: Optimal concentrations/dilutions should be determined by the end user.*

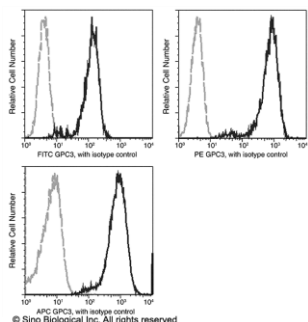
# Glypican 3 / GPC3 / OCI-5 Antibody (FITC), Rabbit MAb

Catalog Number: 100393-R024-F



Sino Biological  
Biological Solution Specialist

EliteRmab® is a registered trademark of Sino Biological Inc.



Flow cytometric analysis of Human GPC3 expression on HepG2 cells. Cells were stained with FITC-conjugated anti-Human GPC3. The fluorescence histograms were derived from gated events with the forward and side light-scatter characteristics of intact cells.

Flow cytometry was performed on a BD FACSCalibur flow cytometry system. Please refer to [www.sinobiological.com/Flow-Cytometry-FACS-Protocols-a-750.html](http://www.sinobiological.com/Flow-Cytometry-FACS-Protocols-a-750.html) for technical protocols.