

KLF4 Antibody, Rabbit PAb, Antigen Affinity Purified



Sino Biological
Biological Solution Specialist

Catalog Number: 100418-T36

GENERAL INFORMATION

Immunogen:	A synthetic peptide corresponding to the N-terminus of the human KLF4
Preparation	Produced in rabbits immunized with A synthetic peptide corresponding to the N-terminus of the human KLF4, and purified by antigen affinity chromatography.
Ig Type:	Rabbit IgG
Specificity:	Human Mouse (Species predicted to react based on 100% sequence homology)
Formulation:	0.2 µm filtered solution in PBS
Storage:	This antibody can be stored at 2°C-8°C for one month without detectable loss of activity. Antibody products are stable for twelve months from date of receipt when stored at -20°C to -80°C. Preservative-Free. Sodium azide is recommended to avoid contamination (final concentration 0.05%-0.1%). It is toxic to cells and should be disposed of properly. Avoid repeated freeze-thaw cycles.

APPLICATIONS

Applications:	WB,IP
----------------------	-------

RECOMMENDED CONCENTRATION

Western Blot	WB: 1:500-1:1000
Immunoprecipitation	IP: 1-2 µL/mg of lysate

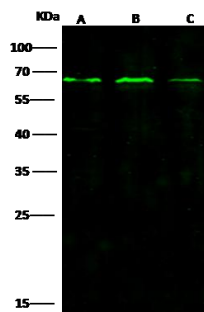
Please Note: Optimal concentrations/dilutions should be determined by the end user.

KLF4 Antibody, Rabbit PAb, Antigen Affinity Purified



Sino Biological
Biological Solution Specialist

Catalog Number: 100418-T36



Anti-KLF4 rabbit polyclonal antibody at 1:500 dilution
Lane A: 293T Whole Cell Lysate
Lane B: Caco-2 Whole Cell Lysate
Lane C: HEK293 Whole Cell Lysate

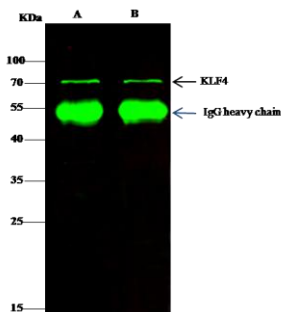
Lysates/proteins at 30 µg per lane.

Secondary

Goat Anti-Rabbit IgG H&L (Dylight800) at 1/10000 dilution.

Developed using the Odyssey technique.
Performed under reducing conditions.

Predicted band size: 54 kDa
Observed band size: 65 kDa



KLF4 was immunoprecipitated using:
Lane A: 0.5 mg Hela Whole Cell Lysate
Lane B: 0.5 mg 293T Whole Cell Lysate

0.5 µL anti-KLF4 rabbit polyclonal antibody
and 15 µl of 50 % Protein G agarose.

Primary antibody:

Anti-KLF4 rabbit polyclonal antibody, at 1:500 dilution

Secondary antibody:

Dylight 800-labeled antibody to rabbit IgG (H+L), at 1:5000 dilution

Developed using the odssey technique.
Performed under reducing conditions.

Predicted band size: 65 kDa
Observed band size: 65 kDa