

Human CDC42 / G25K Protein (GST Tag)



Sino Biological
Biological Solution Specialist

Catalog Number: 10062-H09E

General Information

Gene Name Synonym:

CDC42Hs; G25K

Protein Construction:

A DNA sequence encoding the mature form of human CDC42 isoform 2 (P60953-2) (Met 1-Cys 188) was fused with the GST tag at the N-terminus.

Source: Human

Expression Host: E. coli

QC Testing

Purity: > 85 % as determined by SDS-PAGE

Endotoxin:

Please contact us for more information.

Stability:

Samples are stable for up to twelve months from date of receipt at -70 °C

Predicted N terminal: Met

Molecular Mass:

The recombinant human CDC42/GST chimera consists of 423 amino acids and has a predicted molecular mass of 48.1 kDa. It migrates as an approximately 44 kDa band in SDS-PAGE under reducing conditions.

Formulation:

Lyophilized from sterile 20mM Tris, 0.15M NaCl, 0.5mM GSH, pH 8.0

Normally 5 % - 8 % trehalose, mannitol and 0.01% Tween80 are added as protectants before lyophilization. Specific concentrations are included in the hardcopy of COA. Please contact us for any concerns or special requirements.

Usage Guide

Storage:

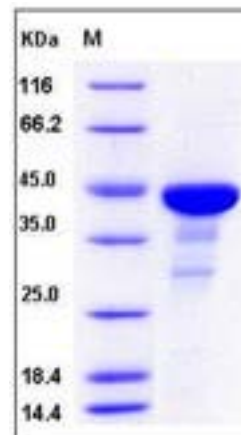
Store it under sterile conditions at -20°C to -80°C upon receiving. Recommend to aliquot the protein into smaller quantities for optimal storage.

Avoid repeated freeze-thaw cycles.

Reconstitution:

Detailed reconstitution instructions are sent along with the products.

SDS-PAGE:



References

et al. 1. Shinjo K, et al. (1990) Molecular cloning of the gene for the human placental GTP-binding protein Gp (G25K): identification of this GTP-binding protein as the human homolog of the yeast cell-division-cycle protein CDC42. *Proc Natl Acad Sci.* 87(24):9853-7. 2. Munemitsu S, et al. (1990) Molecular cloning and expression of a G25K cDNA, the human homolog of the yeast cell cycle gene CDC42. *Mol Cell Biol.* 10(11):5977-82. 3. Walker S J, et al. (2000) Activation of phospholipase D1 by Cdc42 requires the Rho insert region. *J Biol Chem.* 275(21):15665-8.

Manufactured By Sino Biological Inc., FOR RESEARCH USE ONLY. NOT FOR USE IN HUMANS.

For US Customer: Fax: 267-657-0217 • Tel: 215-583-7898

Global Customer: Fax :+86-10-5862-8288 • Tel:+86-400-890-9989 • <http://www.sinobiological.com>