



Catalog Number: 10082-R026

EliteRmab® is a registered trademark of Sino Biological Inc.

GENERAL INFORMATION	
Immunogen:	Recombinant Human MMP-2 protein (Catalog#10082-HNAH)
Preparation	This antibody was obtained from a rabbit immunized with purified, recombinant Human MMP-2 (rh MMP-2; Catalog#10082-HNAH; NP_004521.1; Met 1-Cys660).
Ig Type:	Rabbit IgG
Clone ID:	026
Specificity:	Human MMP-2
	No cross-reactivity in ELISA with Human MMP1 Human MMP9 Human MMP8
Formulation:	0.2 µm filtered solution in PBS
Storage:	This antibody can be stored at 2°C-8°C for one month without detectable loss of activity. Antibody products are stable for twelve months from date of receipt when stored at -20°C to -80°C. Preservative-Free. Sodium azide is recommended to avoid contamination (final concentration 0.05%-0.1%). It is toxic to cells and should be disposed of properly. Avoid repeated freeze-thaw cycles.
APPLICATIONS	
Applications:	WB
RECOMMENDED CONCENTRATION	
Western Blot	WB: 1:500-1:1000

**Please Note: Optimal concentrations/dilutions should be determined by the end user.**

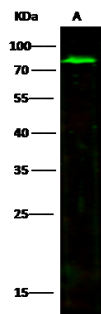
# MMP-2 Antibody, Rabbit MAb



Sino Biological  
Biological Solution Specialist

Catalog Number: 10082-R026

EliteRmab® is a registered trademark of Sino Biological Inc.



Anti-MMP2 rabbit monoclonal antibody at  
1:500 dilution  
Lane A: MCF7 Whole Cell Lysate

Lysates/proteins at 30 µg per lane.  
Secondary  
Goat Anti-Rabbit IgG H&L (Dylight800) at  
1/10000 dilution.

Developed using the Odyssey technique.  
Performed under reducing conditions.

Predicted band size:73 kDa  
Observed band size:73 kDa