

CD146 / MCAM Antibody (PE), Mouse MAb



Sino Biological
Biological Solution Specialist

Catalog Number: 10115-MM01-P

GENERAL INFORMATION

Immunogen:	Recombinant Human CD146 / MCAM protein (Catalog#10115-H08H)
Reagents:	PE-conjugated Mouse monoclonal antibody
Preparation	This antibody was produced from a hybridoma resulting from the fusion of a mouse myeloma with B cells obtained from a mouse immunized with purified, recombinant Human CD146 / MCAM (rh CD146 / MCAM; Catalog#10115-H08H; NP_006491.2; Met 1-Gly 559) and conjugated with PE under optimum conditions, the unreacted PE was removed.
Ig Type:	Mouse IgG1
Clone ID:	01
Specificity:	Human CD146 / MCAM
Concentration:	10 µl/Test, 0.1 mg/ml
Formulation:	PBS solution containing 0.5% BSA and 0.09% sodium azide
Storage:	This antibody can be stored at 2°C-8°C for twelve months without detectable loss of activity. Protected from prolonged exposure to light. Do not freeze ! Sodium azide is toxic to cells and should be disposed of properly. Flush with large volumes of water during disposal.
Alternative Names:	MCAM

APPLICATIONS

Applications: FCM

RECOMMENDED CONCENTRATION

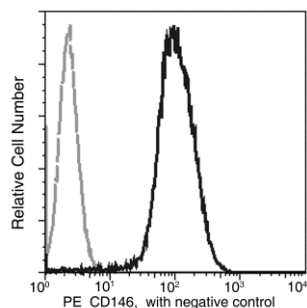
Please Note: Optimal concentrations/dilutions should be determined by the end user.

CD146 / MCAM Antibody (PE), Mouse MAb



Sino Biological
Biological Solution Specialist

Catalog Number: 10115-MM01-P



Flow cytometric analysis of Human CD146 expression on HeLa cells. Cells were stained with PE-conjugated anti-Human CD146. The fluorescence histograms were derived from gated events with the forward and side light-scatter characteristics of intact cells.

Flow cytometry was performed on a BD FACSCalibur flow cytometry system. Please refer to www.sinobiological.com/Flow-Cytometry-FACS-Protocols-a-750.html for technical protocols.