

CD146 / MCAM Antibody, Mouse MAb



Sino Biological
Biological Solution Specialist

Catalog Number: 10115-MM01

GENERAL INFORMATION

Immunogen:	Recombinant Human CD146 / MCAM protein (Catalog#10115-H08H)
Preparation	This antibody was produced from a hybridoma resulting from the fusion of a mouse myeloma with B cells obtained from a mouse immunized with purified, recombinant Human CD146 / MCAM (rh CD146 / MCAM; Catalog#10115-H08H; NP_006491.2; Met1-Gly559). The IgG fraction of the cell culture supernatant was purified by Protein A affinity chromatography.
Ig Type:	Mouse IgG1
Clone ID:	01
Specificity:	Human CD146 / MCAM
Formulation:	0.2 µm filtered solution in PBS
Storage:	This antibody can be stored at 2°C-8°C for one month without detectable loss of activity. Antibody products are stable for twelve months from date of receipt when stored at -20°C to -80°C. Preservative-Free. Avoid repeated freeze-thaw cycles.

APPLICATIONS

Applications:	FCM
----------------------	-----

RECOMMENDED CONCENTRATION

Flow Cytometry	FCM: 1:25-1:100
-----------------------	-----------------

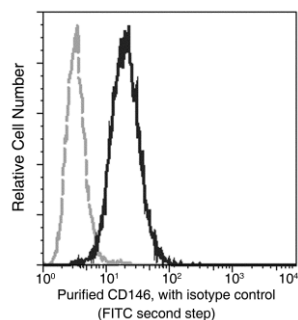
Please Note: Optimal concentrations/dilutions should be determined by the end user.

CD146 / MCAM Antibody, Mouse MAb



Sino Biological
Biological Solution Specialist

Catalog Number: 10115-MM01



Profile of anti-CD146 reactivity on HeLa cells analyzed by flow cytometry.

Flow cytometry was performed on a BD FACSCalibur flow cytometry system. Please refer to www.sinobiological.com/Flow-Cytometry-FACS-Protocols-a-750.html for technical protocols.