



Catalog Number: 10115-R012

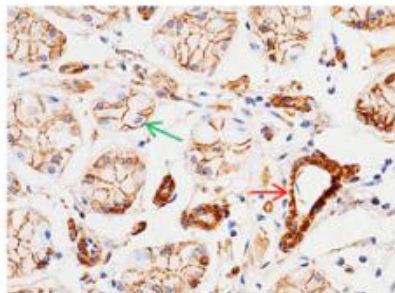
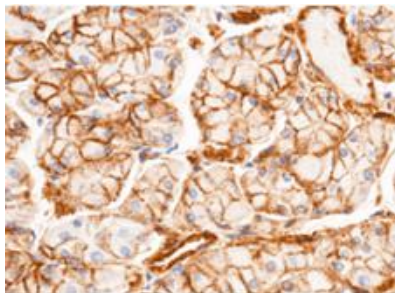
EliteRmab® is a registered trademark of Sino Biological Inc.

GENERAL INFORMATION	
Immunogen:	Recombinant Human CD146 protein (Catalog#10115-H08H)
Preparation	This antibody was obtained from a rabbit immunized with purified, recombinant Human CD146 / MCAM extracellular domain (rh CD146; Catalog#10115-H08H; NP_006491.2; Met 1-Gly 559)
Ig Type:	Rabbit IgG
Clone ID:	012
Specificity:	Human CD146 / MCAM
	No cross-reactivity in ELISA with Human CD66a Human CD166 Human CD106 Human BCAM Human CD226
Formulation:	0.2 µm filtered solution in PBS
Storage:	This antibody can be stored at 2°C-8°C for one month without detectable loss of activity. Antibody products are stable for twelve months from date of receipt when stored at -20°C to -80°C. Preservative-Free. Sodium azide is recommended to avoid contamination (final concentration 0.05%-0.1%). It is toxic to cells and should be disposed of properly. Avoid repeated freeze-thaw cycles.
APPLICATIONS	
Applications:	WB,ELISA,IHC-P
RECOMMENDED CONCENTRATION	
IHC-P	IHC-P: 1:100-1:500
Western Blot	WB: 1:500-1:2000
ELISA	ELISA: 1:5000-1:10000 This antibody can be used at 1:5000-1:10000 with the appropriate secondary reagents to detect Human CD146 in ELISA.

Please Note: Optimal concentrations/dilutions should be determined by the end user.

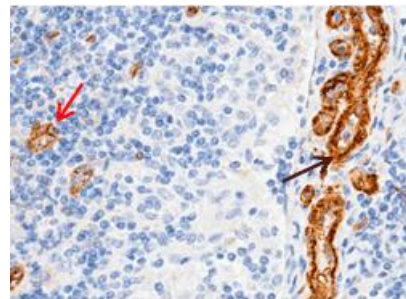
Catalog Number: 10115-R012

EliteRmab® is a registered trademark of Sino Biological Inc.



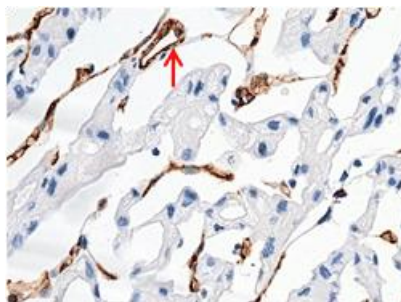
Immunohistochemical staining of formalin fixed, paraffin-embedded human stomach showing membrane staining of endothelial cells (red arrow), epithelial cells (green arrow). The left panel: 1:200. The right panel: 1:1000.

(Validation Experiment)



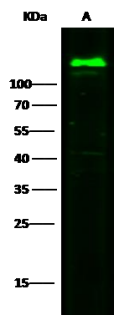
Immunohistochemical staining of formalin fixed, paraffin-embedded human lymphonode showing membrane staining of endothelial cells (red arrow), smooth muscle cells (black arrow) (1:200).

(Validation Experiment)



Immunohistochemical staining of formalin fixed, paraffin-embedded human kidney showing membrane staining of endothelial cells (red arrow) (1:200).

(Validation Experiment)



Anti-CD146 rabbit monoclonal antibody at 1:500 dilution

Lane A: HeLa Whole Cell Lysate

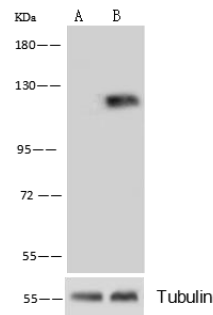
Lysates/proteins at 30 µg per lane.

Secondary
Goat Anti-Rabbit IgG H&L (Dylight800) at 1/10000 dilution.

Developed using the Odyssey technique.
Performed under reducing conditions.

Predicted band size: 132 kDa
Observed band size: 140 kDa

(Validation Experiment)



Anti-CD146 rabbit monoclonal antibody at 1:500 dilution

Lane A: CD146 knockout HeLa Whole Cell Lysate

Lane B: HeLa Whole Cell Lysate

Lysates/proteins at 10 µg per lane.

Secondary
Goat Anti-Rabbit IgG (H+L)/HRP at 1/10000 dilution.

Developed using the ECL technique.
Performed under reducing conditions.

Predicted band size: 132 kDa
Observed band size: kDa

(Validation Experiment)