

CD146 / MCAM Antibody, Rabbit PAb, Antigen Affinity Purified



Sino Biological
Biological Solution Specialist

Catalog Number: 10115-RP02

GENERAL INFORMATION	
Immunogen:	Recombinant Human CD146 protein (Catalog#10115-H08H)
Preparation	Produced in rabbits immunized with purified, recombinant Human CD146 / MCAM extracellular domain (rh CD146; Catalog#10115-H08H; NP_006491.2; Met 1-Gly 559). CD146 specific IgG was purified by human CD146 affinity chromatography.
Ig Type:	Rabbit IgG
Specificity:	Human CD146 / MCAM
Formulation:	0.2 µm filtered solution in PBS
Storage:	This antibody can be stored at 2°C-8°C for one month without detectable loss of activity. Antibody products are stable for twelve months from date of receipt when stored at -20°C to -80°C. Preservative-Free. Avoid repeated freeze-thaw cycles.
APPLICATIONS	
Applications:	ELISA, IHC-P
RECOMMENDED CONCENTRATION	
IHC-P	IHC-P: 1:100-1:500
ELISA	ELISA: 1:1000-1:2000 This antibody can be used at 1:1000-1:2000 with the appropriate secondary reagents to detect Human CD146.

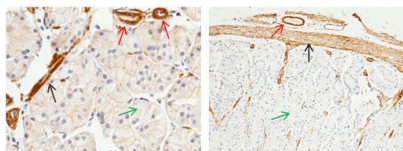
Please Note: Optimal concentrations/dilutions should be determined by the end user.

CD146 / MCAM Antibody, Rabbit PAb, Antigen Affinity Purified

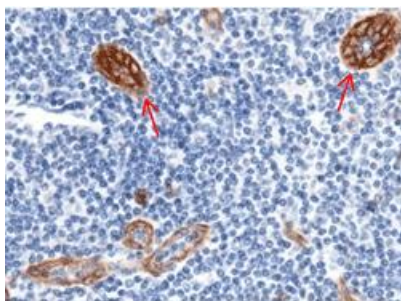


Sino Biological
Biological Solution Specialist

Catalog Number: 10115-RP02



Immunohistochemical staining of formalin fixed, paraffin-embedded human stomach showing (The left panel: 1:500. The right panel: 1:5000).
1. Membrane staining of endothelial cells (red arrow) 2. Smooth muscle cells (black arrow) 3. Epithelial cells (green arrow)



Immunohistochemical staining of formalin fixed, paraffin-embedded human lymphonode showing membrane staining of endothelial cells (red arrow) (1:5000).